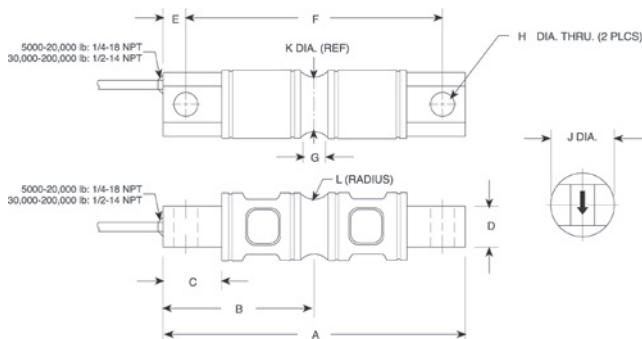


RL70000

Double-ended Beam, Alloy Steel, NTEP Certified 1:10,000 Class IIIIL Multiple Cell, IP67



Picture is a representation of actual product



Specifications

Full Scale Output:
3.0mV/V

Output Resistance:
700 (± 5) ohms

Input Resistance:
770 (± 10) ohms

Material/Finish:
High-alloy steel, nickel plated

Temperature:
Compensated range
14° F to 104° F/-10° C to 40° C
Operating range
-40° F to 150° F/-40° C to 65° C

Safe Overload:
150% full scale

Safe Sideload:
100% full scale

Rated Excitation:
5-10 VDC (15 V maximum)

Combined Error:
0.02% full scale

Insulation Resistance:
5,000 megohms

Seal Type:
Environmentally sealed, IP67

Deflection at Capacity:
5,000 lb=0.02 in (0.5 mm)
10,000 lb=0.025 in (0.6 mm)
20,000 lb=0.042 in (1.1 mm)
30,000-50,000 lb=0.02 in (0.5 mm)
60,000 lb=0.025 in (0.6 mm)
100,000 lb=0.02 in (0.5 mm)

Cable Length:
30 ft (9.1 m)

Cable Diameter:
5,000 lb-20,000 lb=0.200
30,000 lb-250,000 lb=0.305

Cable Color Code:
Red+ Excitation
Black.....- Excitation
Green.....+ Signal
White- Signal

Warranty:
Two-year limited warranty



Dimensions

RATED CAPACITY	A	B	C	D	E	F	G	H	J	K	L
lb/inches											
5,000-10,000	8.12	4.06	1.44	1.12	0.62	6.88	0.62	0.66	1.70	1.48	0.50
20,000	8.12	4.06	1.44	1.12	0.62	6.88	0.84	0.66	1.95	1.48	0.50
30,000-60,000	10.25	5.12	1.88	2.37	0.88	8.50	1.00	1.06	3.20	2.73	1.00
100,000	11.25	5.62	1.88	2.50	0.88	9.50	1.00	1.06	3.50	3.24	1.50
150,000	11.25	5.62	1.88	2.80	0.88	9.50	1.25	1.06	3.90	3.64	1.50
200,000-250,000	16.10	8.05	3.05	4.60	1.55	13.00	1.30	1.56	5.38	5.17	2.00
kg/mm											
2,268.0-9,071.9	206.3	103.1	36.6	28.5	15.8	174.8	15.8	16.8	55.9	37.6	12.7
9,071.9	206.3	103.1	36.6	14.2	21.3	174.8	21.3	16.8	52.8	37.6	12.7
13,607.8-27,215.6	260.4	130.1	47.8	60.2	22.4	215.9	25.4	26.9	81.3	69.3	25.4
45,359.4	285.8	142.8	47.8	63.5	22.4	241.3	25.4	26.9	88.9	82.3	25.4
68,038.8	285.8	142.8	47.8	71.1	22.4	241.3	31.8	26.9	99.1	92.5	38.1
90,718.5-113,398	409.0	204.5	77.5	116.8	39.4	330.2	33.0	39.6	136.7	131.3	50.8

Order Information

LOAD RATING	PART #	EST. SHIPPING WEIGHT	PRICE
NTEP Certified			
5,000 lb	(2,268.0 kg) 36263	5 lb	Consult
10,000 lb	(4,535.9 kg) 36264	6 lb	Consult
20,000 lb	(9,071.9 kg) 36265	7 lb	Consult
30,000 lb	(13,607.8 kg) 36266	18 lb	Consult
40,000 lb	(18,143.7 kg) 36267	18 lb	Consult
50,000 lb	(22,679.6 kg) 36268	18 lb	Consult
60,000 lb	(27,215.5 kg) 36269	18 lb	Consult
100,000 lb	(45,359.2 kg) 36270	28 lb	Consult
150,000 lb	(68,038.8 kg) 36976	34 lb	Consult
200,000 lb	(90,718.5 kg) 36977	90 lb	Consult
Non-NTEP			
250,000 lb	(113,398.0 kg) 36978	93 lb	Consult

Interchangeable Products

MANUFACTURER	MODEL	PAGE #
VPG Revere®*	5103*	278
Artech®	70210	—
Mettler-Toledo	SLD 430	—
VPG Celtron®	CSB	205

*Conduit adapter optional

Weigh Module Available

MANUFACTURER	MODEL	PAGE #
Rice Lake Weighing Systems	EZ Mount 1	86