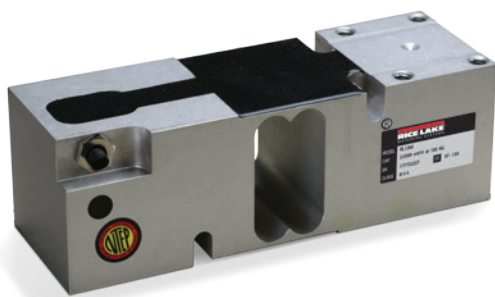
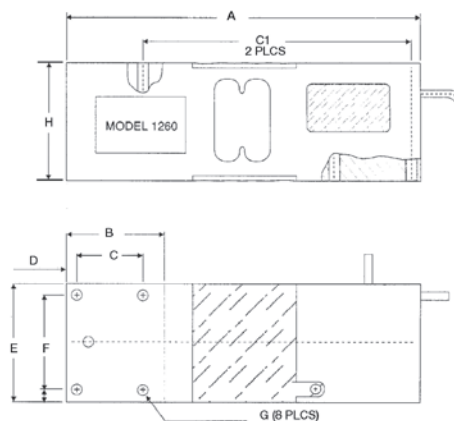


# RL1260

Single Point, Aluminum NTEP Certified 1:5000 Class III Single Cell, IP67



Picture is a representation of actual product



## Specifications

**Full Scale Output:**

2.0mV/V

**Output Resistance:**

350 (± 3) ohms

**Input Resistance:**

415 (± 15) ohms

**Material/Finish:**

Anodized aluminum

**Temperature:**

Compensated range  
14°F to 104°F/-10°C to 40°C  
Operating range  
-40°F to 150°F/-40°C to 65°C

**Safe Overload:**

200% of full scale at center loading point

**Rated Excitation:**

5-10 VDC (15 V maximum)

**Total Error:**

0.02% full scale

**Insulation Resistance:**

5,000 megohms

**Seal Type:**

Environmentally sealed, IP67

**Cable Length:**

3.1 m (10 ft)

**Cable Diameter:**

0.220 polyurethane jacket

**Cable Color Code:**

Green ..... + Excitation  
Black..... - Excitation  
Blue ..... + Sense  
Brown ..... - Sense  
Red ..... + Signal  
White ..... - Signal

**Max Platform Size:**

24 in x 24 in

**Warranty:**

Two-year limited warranty

**Approvals:**



## Dimensions

RATED CAPACITY	A	B	C	C1	D	E	F	G	H
<b>lb/inches</b>									
110.2-1,400.2	7.40	2.05	1.38	5.59	0.22	2.49	1.97	5/16-18UNC-2B	2.45
<b>kg/mm</b>									
50-635	188.00	52.00	35.00	142.00	5.5	63.5	50.00	5/16-18UNC-2B	62.3

## Order Information

LOAD RATING	PART #	EST. SHIPPING WEIGHT	PRICE
50 kg (110.2 lb)	41020	5 lb	Consult
75 kg (165.4 lb)	41021	5 lb	Consult
100 kg (220.5 lb)	41022	5 lb	Consult
150 kg (330.7 lb)	158469	5 lb	Consult
200 kg (440.9 lb)	41023	5 lb	Consult
250 kg (551.2 lb)	41024	5 lb	Consult
300 kg (661.4 lb)	41025	5 lb	Consult
500 kg (1,102.3 lb)	41026	5 lb	Consult
635 kg (1,400.2 lb)	41027	5 lb	Consult

## Interchangeable Products

MANUFACTURER	MODEL	PAGE #
VPG Tedeo-Huntleigh®	1260	343
HBM®	PW16	254
Rice Lake Weighing Systems	RLPWM16	176