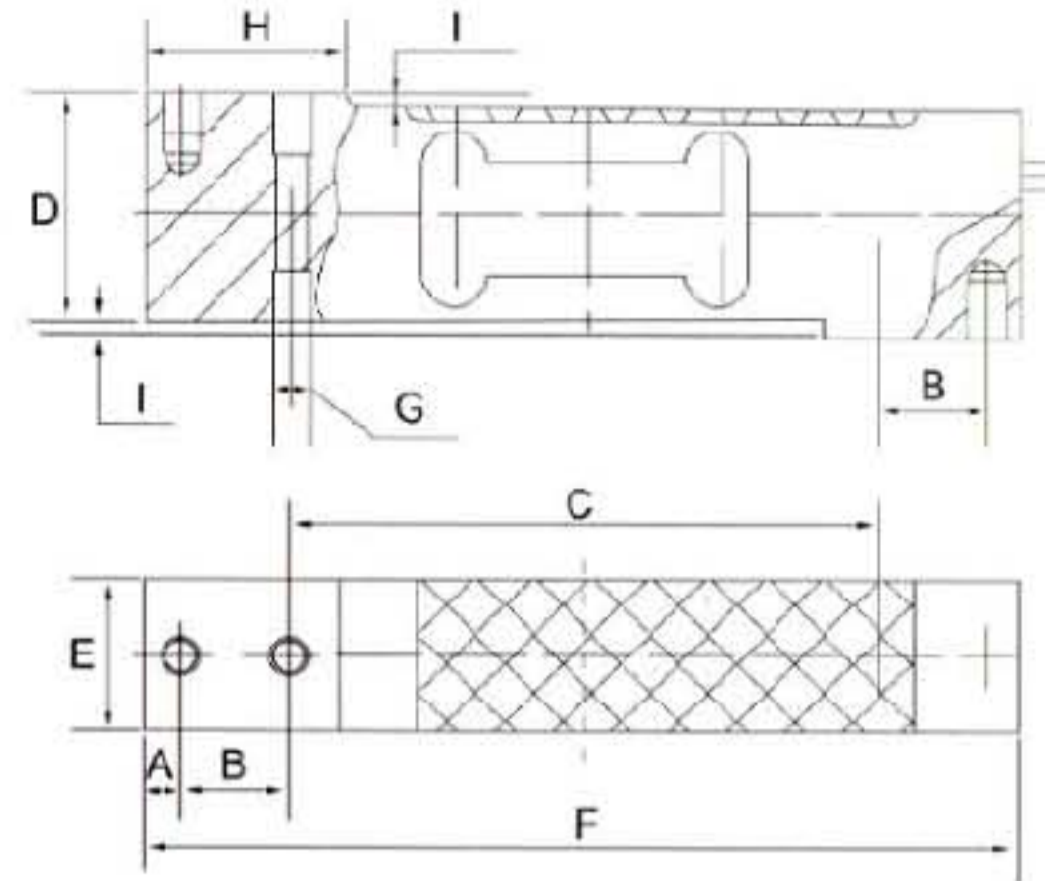


SLS9

Single Point Load Cell

Aluminum



SPECIFICATIONS:

Rated Output	$2 \pm 0.2\text{mV/V FS}$
Nonlinearity	$\pm 0.017\% \text{ FS}$
Hysteresis	$\pm 0.02\% \text{ FS}$
Repeatability	$\pm 0.01\% \text{ FS}$
Creep	$\pm 0.02\% \text{ FS/30min}$
Zero Balance	$\pm 1\% \text{ FS}$
Temperature Effect On Zero	$\pm 0.02\% \text{ FS/10}^\circ\text{C}$
Temperature Effect On Rated Output	$\pm 0.02\% \text{ FS/10}^\circ\text{C}$
Input Resistance	$409 \pm 15 \Omega$
Output Resistance	$350 \pm 3 \Omega$
Insulation Resistance	$\geq 5000\text{M} \Omega$
Excitation Voltage	10(Recommended), 18(Max)VDC/AC
Compensated Temperature Range	$-10 \text{ to } +40^\circ\text{C}$
Operating Temperature Range	$-35 \text{ to } +65^\circ\text{C}$
Safe Overload	150% FS
Ultimate Overload	300% FS
Protection Class	IP 65
Cable Length	9.8'/3m
Cable Color Code	Red +Exc Black -Exc Green +Sig White -Sig Blue +Sen Brown -Sen
Max Platform	600x600mm

DIMENSIONS:

Capacity	A	B	C	D	E	F	G	H	I
kg									
3, 5, 10									
15, 20, 30	5	31	100	40	25.4	150	M6	34	1.5
50, 75, 100									

Dimensions and specifications are subject to change without notice.



<http://www.sensolink.com> E-mail: sales@sensolink.com