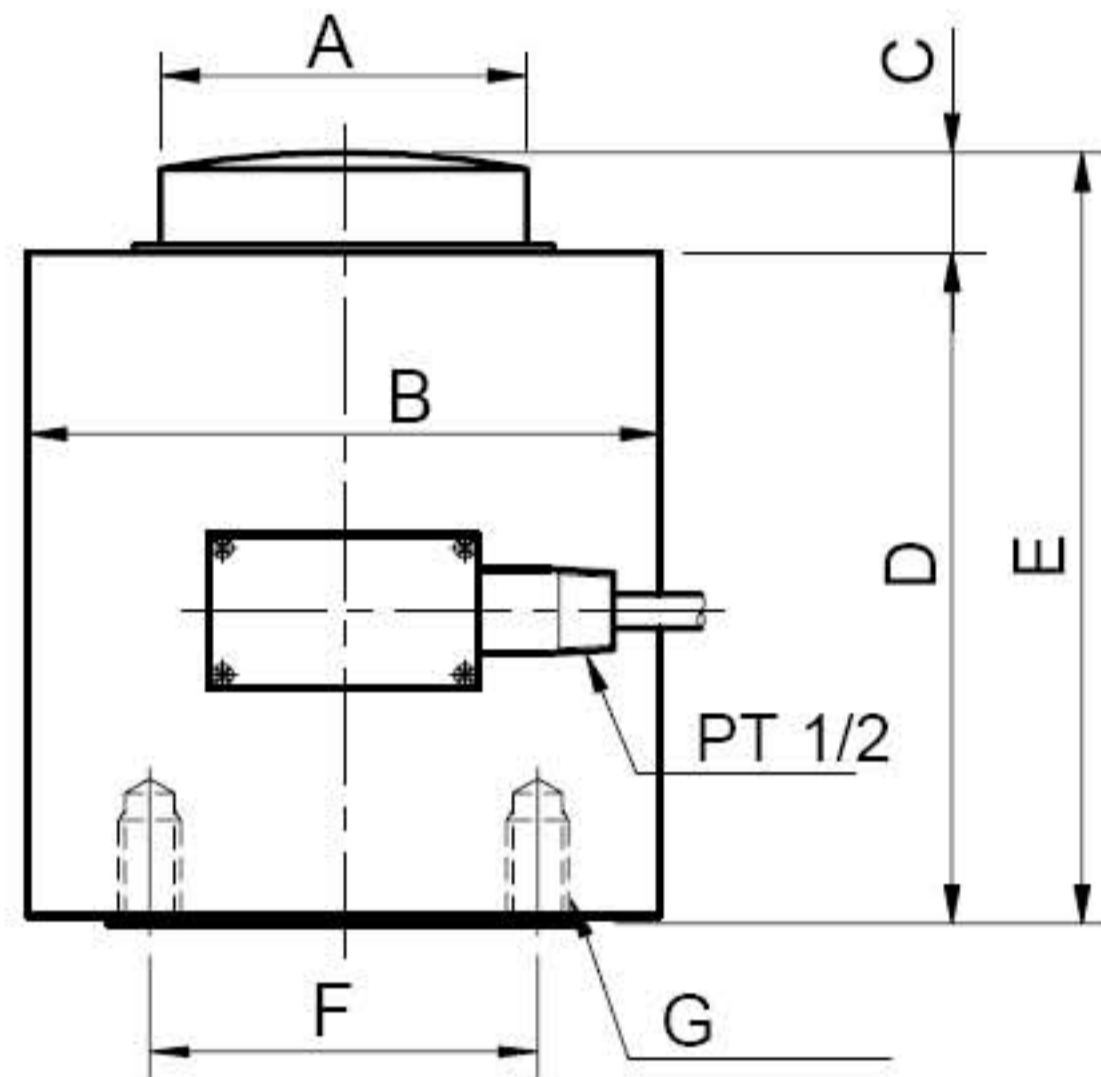


SLCS1 Compression Canister Alloy steel



SPECIFICATIONS:

| | |
|------------------------------------|--|
| Rated Output | $2 \pm 0.02 \text{mV/V FS}$ |
| Nonlinearity | $\pm 0.3\% \text{ FS}$ |
| Hysteresis | $\pm 0.3\% \text{ FS}$ |
| Repeatability | $\pm 0.15\% \text{ FS}$ |
| Creep | $\pm 0.02\% \text{ FS/30min}$ |
| Zero Balance | $\pm 0.02 \text{mV/V}$ |
| Temperature Effect On Zero | $\pm 0.02\% \text{ FS/10}^\circ\text{C}$ |
| Temperature Effect On Rated Output | $\pm 0.02\% \text{ FS/10}^\circ\text{C}$ |
| Input Resistance | $350 \pm 3.5 \Omega$ |
| Output Resistance | $350 \pm 5 \Omega$ |
| Insulation Resistance | $\geq 2000 \text{M}\Omega$ |
| Excitation Voltage | 12(Recommended), 20(Max)VDC/AC |
| Compensated Temperature Range | $-10 \text{ to } +70^\circ\text{C}$ |
| Operating Temperature Range | $-20 \text{ to } +100^\circ\text{C}$ |
| Safe Overload | 150% FS |
| Ultimate Overload | 200% FS |
| Protection Class | IP 64 |
| Cable Length | 3m |
| Cable Color Code | Red + Excitation, Black - Excitation, Green + Signal, White - Signal |

DIMENSIONS:

| Capacity | A | B | C | D | E | F | G |
|----------|-----|-----|----|-----|-----|-----|----------------|
| 50T | 50 | 140 | 20 | 140 | 160 | 80 | 4-M12 Depth 20 |
| 100T | 70 | 165 | 30 | 160 | 190 | 100 | 4-M16 Depth 20 |
| 200T | 95 | 216 | 30 | 200 | 230 | 130 | 4-M16 Depth 25 |
| 300T | 120 | 216 | 30 | 290 | 320 | 130 | 4-M24 Depth 35 |
| 500T | 170 | 318 | 30 | 370 | 400 | 200 | 6-M30 Depth 50 |

Dimensions and specifications are subject to change without notice.



<http://www.sensolink.com> E-mail: sales@sensolink.com