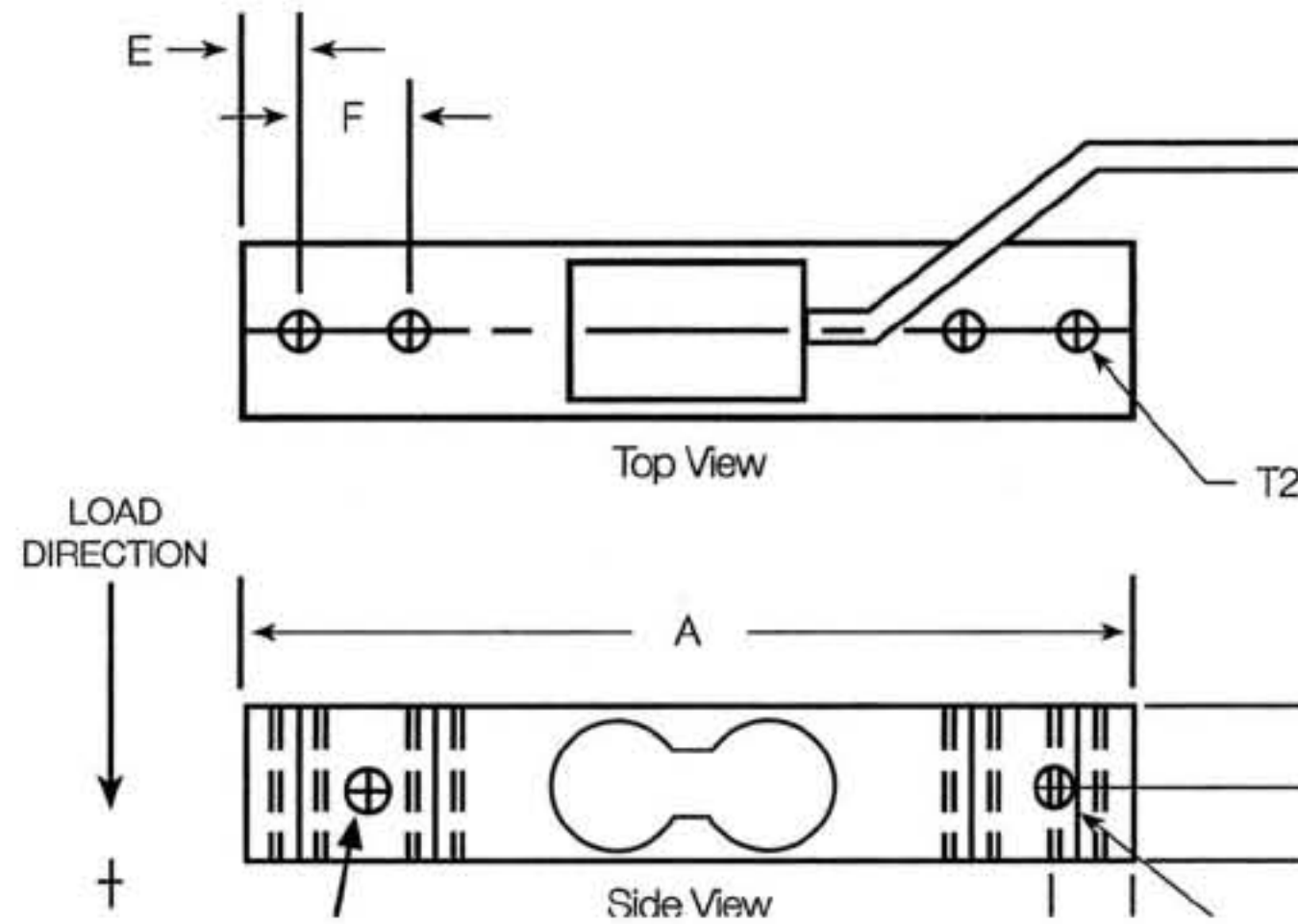


RLS3020 Mini Beam Sensor, Aluminum



RATED CAPACITY	DIMENSIONS								
	A	B	C	D	E	F	G	T	T2
lb/inches 1-50	3.14	.550	.275	.30	.20	.40	.19	10-32UNF THRU	8-32UNF-2 THRU
kg/mm 0.5-22.7	79.7	13.9	6.9	7.6	5.0	10.1	4.8	10-32UNF THRU	8-32UNF-2 THRU

SPECIFICATIONS:

Full Scale Output:	1.5 mV/V nominal	Insulation Resistance:	2000 megohms
Bridge Resistance:	1000 ohms, nominal	Seal Type:	Environmentally-sealed
Material/Finish:	Aluminum, black anodized	Cable Length:	10' / 3 m
Temperature:	Compensated range 0°F to 150°F / -18°C to 65°C	Cable Color Code:	Red..... + Excitation Black..... - Excitation Green..... + Signal White..... - Signal
Safe Overload:	150% Full scale	Warranty:	1-year limited warranty
Rated Excitation:	10V DC		
Nonlinearity:	0.10% Full scale		
Hysteresis:	0.03% Full scale		

RLS3020 ORDER INFORMATION

Load Rating	Part #
2 lb (0.9 kg)	42527
5 lb (2.3 kg)	42528
10 lb (4.5 kg)	42529
15 lb (6.8 kg)	47947
25 lb (11.3 kg)	42530
50 lb (22.7 kg)	47948