

MSC SMALL DIAMETER HIGH CAPACITY LOAD BUTTON (US & METRIC)

FEATURES & BENEFITS

- Proprietary Interface temperature compensated strain gages
- Small compact design
- Environmentally sealed
- Low deflection

SPECIFICATIONS

ACCURACY – (MAX ERROR)		
Nonlinearity – %FS		± 0.5
Hysteresis – %FS		± 0.5
Non-repeatability – %RO		± 0.10
Creep, in 20 min – %		± 0.15
TEMPERATURE		
Compensated Range	°F	+40 to +140
	°C	+5 to +60
Operating Range	°F	-40 to +175
	°C	-40 to +80
Effect on Output – % MAX	°F	±0.2
	°C	±0.005
Effect on Zero – %RO MAX	°F	±0.5
	°C	±0.002
ELECTRICAL		
Rated Output – mV/V (Nominal) ± %		2 +40/-20
Zero Balance – %RO		±2
Bridge Resistance – Ohm (Nominal)		700
Excitation Voltage – VDC MAX		15
Insulation Resistance – Megohm		5000
MECHANICAL		
Calibration		Compression
Safe Overload – %CAP		150
Material		Stainless steel

OPTIONS

- Cable length
- Custom calibration
- Transducer Electronic Data Sheet (TEDS)
- Standard output
- Add connector to cable
- Special temperature range

CONNECTOR OPTIONS

- 5 ft (1.5 m) integral cable

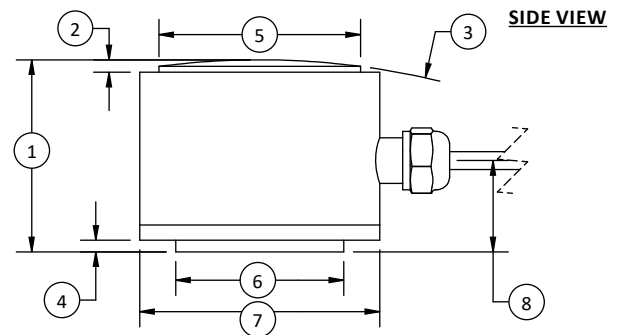
ACCESSORIES

- Instrumentation

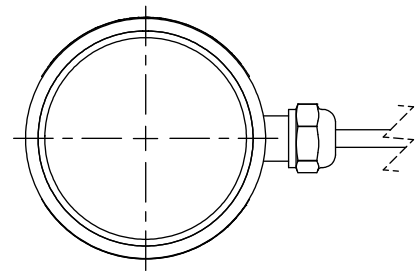
STANDARD CONFIGURATION



Model MSC (shown)



SIDE VIEW



TOP VIEW

DIMENSIONS

See Drawing	CAPACITY	
	U.S. (lbf)	Metric (N)
	15K, 20K, 30K	65K, 90K, 130K
	in	mm
(1)	1.00	25.4
(2)	0.06	1.52
(3)	R 4.0 ±0.5	R 101.6 ±13
(4)	0.06	1.52
(5)	1.05	26.67
(6)	0.875	22.23
(7)	1.25	31.75
(8)	0.5 ±0.1	12.32