

▶ CI-16

▶ **DOUBLE-ENDED
SHEAR BEAM**

▶ **ALLOY STEEL**

Coti, Inc. • 122 Export Circle • Huntsville, Alabama 35806 • Toll Free: 1-888-268-4462 • Fax: 256-859-5024 • www.cotiinc.com



CI-16 ORDER INFORMATION

DISCOUNT C SUGGESTED LIST PRICE
 1K, 1.5K, 2K, 2.5K, 3K, 5K
 10K, 15K, 20K, 25K, 35K
 50K
 * 75K
 *100K & 125K
 * Has square center

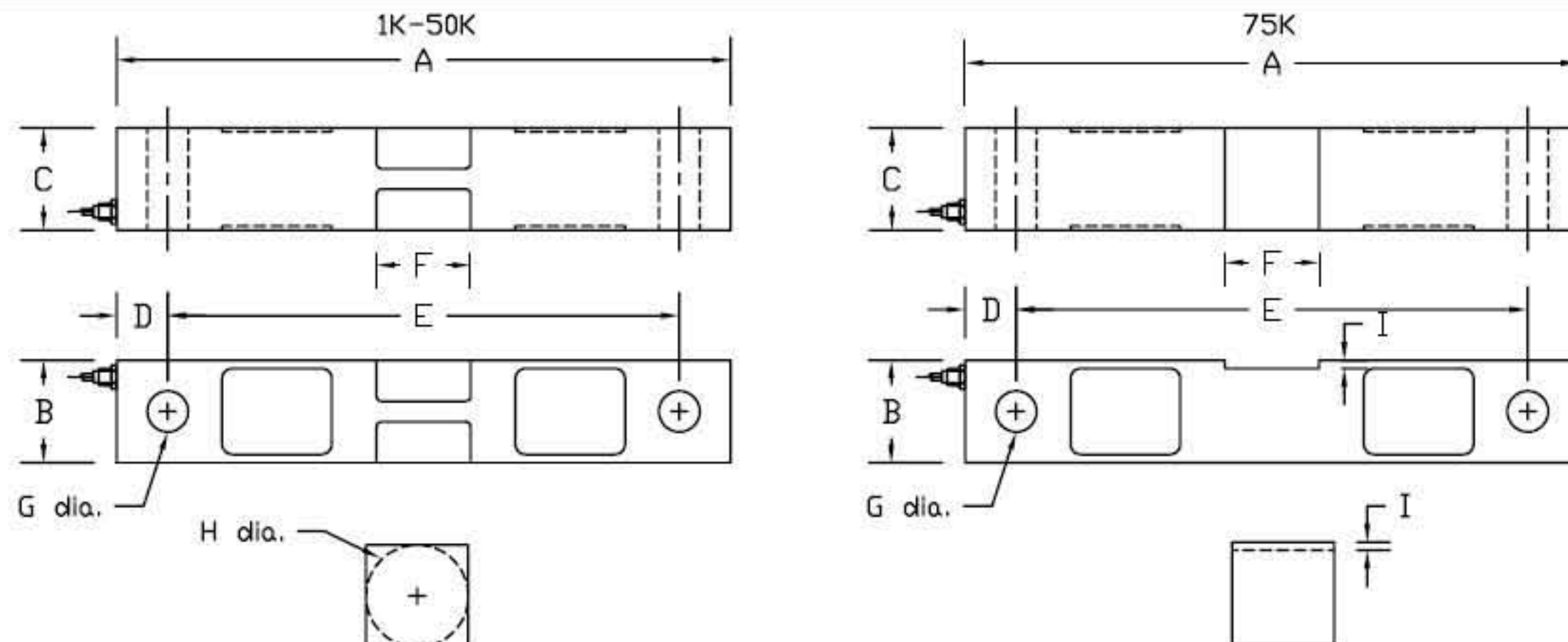
INTERCHANGEABLE PRODUCTS

Rice Lake Weighing Systems..... RL75016
 Sensortronics..... 65016
 Revere..... 5203
 Celtron..... DSR
 Artech..... 70510

WEIGH MODULES

Coti CI16M

Main Dimensions and Accessories



| RATED CAPACITY | DIMENSIONS | | | | | | | | | | |
|----------------|------------|------|------|------|-------|------|------|------|------|--|--|
| | A | B | C | D | E | F | G | H | I | | |
| 1K-5K | 7.50 | 1.25 | 1.25 | 0.62 | 6.25 | 1.15 | 0.50 | 1.25 | - | | |
| 10K-25K | 8.75 | 1.94 | 1.44 | 0.62 | 7.50 | 2.00 | 0.81 | 2.00 | - | | |
| 35K | 8.75 | 2.50 | 1.50 | 0.62 | 7.50 | 2.00 | 0.81 | 2.50 | - | | |
| 50K | 13.50 | 2.94 | 2.44 | 1.00 | 11.50 | 3.25 | 1.31 | 3.00 | - | | |
| 75K | 13.50 | 2.94 | 2.44 | 1.00 | 11.50 | 3.25 | 1.31 | - | 0.17 | | |
| 100K-125K | 18.50 | 3.94 | 2.94 | 1.75 | 15.00 | 3.25 | 1.63 | - | 0.25 | | |

▶ SPECIFICATIONS ◀

| | | | |
|------------------------------|--------------------|------------------------------------|-------------------------------|
| Rated Output (mV/V) | 3.00 | Bridge Resistance | 700 |
| Nonlinearity | +/- 0.02% FS | Insulation Resistance | 5000 Megohms |
| Hysteresis | +/- 0.02% FS | Excitation Voltage | 10V AC/DC (15V Max) |
| Repeatability | +/- 0.01% FS | Compensated Temperature Range | -10°C - +50°C |
| Creep (30 minutes) | +/- 0.02% FS | Operating Temperature Range | -20°C - +60°C |
| Zero Balance | +/- 1.00% FS | Safe Overload | 150% FS |
| Temperature Effect on Zero | +/- 0.02% FS/10° C | Cable Length: 1K - 5K 50' Standard | 10K - 125K 50' Braided Shield |
| Temperature Effect on Output | +/- 0.02% FS/10° C | Seal Type | Environmentally-Sealed, IP67 |
| Cable Color Code | Input | Output | |
| | Green +Excitation | White +Signal | |
| | Black -Excitation | Red -Signal | |