

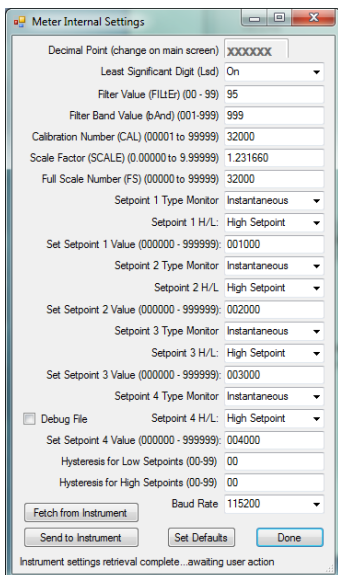
# 9860 TEDS High Speed Self-Configuring Digital Indicator

- Bright 6 digit bipolar LED display ( $\pm 32,768$  counts)
- 0.01% Accuracy
- Fast, direct, scaleable analog output with 1000 Hz bandwidth
- 230 readings per second
- Peak and valley monitoring
- 4 calibration modes: mV/V, applied load, shunt and TEDS plug & play
- Excitation sense
- 4 limit setpoints with solid state relays
- Front panel shunt and tare
- Remote tare



## OPTIONS & ACCESSORIES

- Bench top enclosure
- Plexiglass bench top tilt stand
- Remote peak/valley reset
- Software kit for display, setup & logging



Optional setup software available

## SPECIFICATIONS

### EXCITATION

Excitation Voltage 5, 10 VDC  
switch selectable (internal)  
Current 60, 120 mA respectively

### PERFORMANCE

Maximum Display Range  $\pm 999,999$   
Display Update 5/sec  
Internal Resolution  $\pm 32,768$  counts  
Signal Input Range  $\pm 25$  mV,  $\pm 50$  mV (switch selectable)  
Sensitivity  $0.8 \mu\text{V}/\text{count}$   
Readings Per Second 230  
Maximum Error 0.01% of reading

$\pm 1$  count  
CMR 120 dB  
Scalable Analog Output  $\pm 10$  VDC and 4–20 mA (self-calibrating)

RS232 Output

### ENVIRONMENTAL

Operating Temperature 14 to 122°F  
–10 to 50°C  
Relative Humidity – MAX 90% at 104°F, non-condensing

### POWER

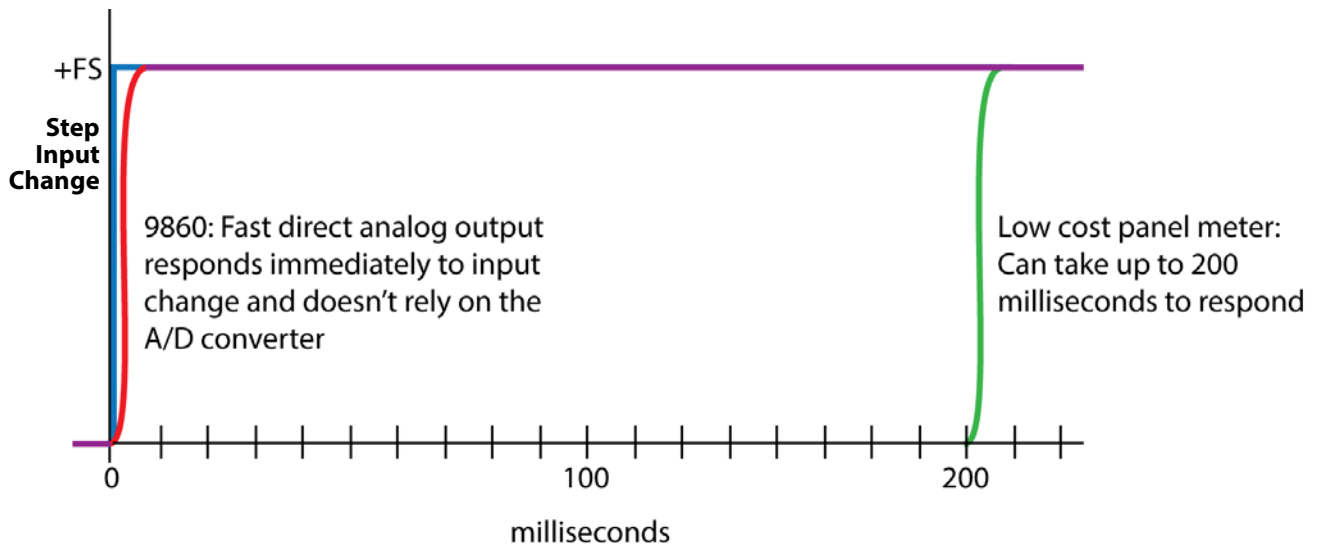
AC 100 to 250 VAC  
50–60 Hz  
Power Consumption 6 watt

### MECHANICAL

Size 3.78" W  $\times$  1.89" H  $\times$  5.1" D  
(96mm  $\times$  48mm  $\times$  130mm)  
Weight 1.3 lb (575g)  
Display LED 14 segment, 0.4" H  
Panel Cutout 3.62" W  $\times$  1.77" H  
(92mm  $\times$  45mm)

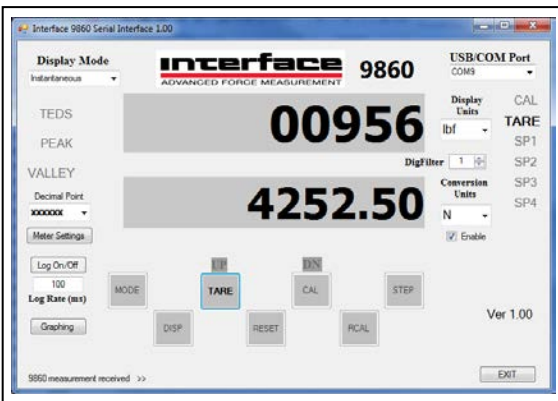
**KEY FEATURE:**

High Speed Direct Analog Output - *Allows accurate capture of quickly changing events*

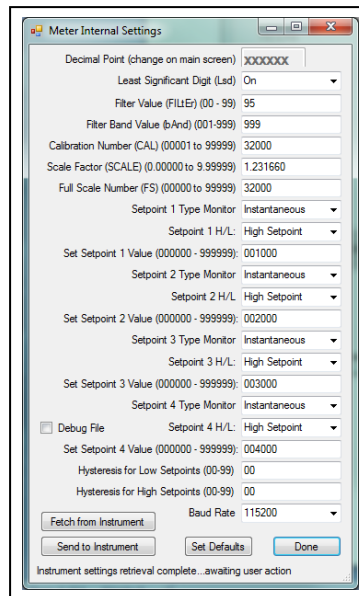


**OPTIONS:**

**Software**



**Display**



**Set Up**

**Logging**

	A	B	C
1	Date	Time	Reading
2	4/14/2014	16:16:57.7161-07:00	956
3	4/14/2014	16:16:57.8781-07:00	956
4	4/14/2014	16:16:57.9711-07:00	956
5	4/14/2014	16:16:58.0771-07:00	956
6	4/14/2014	16:16:58.1891-07:00	956
7	4/14/2014	16:16:58.3001-07:00	956
8	4/14/2014	16:16:58.3941-07:00	956
9	4/14/2014	16:16:58.5041-07:00	956
10	4/14/2014	16:16:58.6201-07:00	956
11	4/14/2014	16:16:58.7241-07:00	956
12	4/14/2014	16:16:58.8211-07:00	956
13	4/14/2014	16:16:58.9322-07:00	956
14	4/14/2014	16:16:59.0372-07:00	956
15	4/14/2014	16:16:59.1492-07:00	956
16	4/14/2014	16:16:59.2512-07:00	956
17	4/14/2014	16:16:59.3492-07:00	956

**Mounting Options**



Benchtop Enclosure



Plexiglass Tilt Stand