

# RLDB50000S

Stainless Steel, NTEP Certified 1:10000 IIL Multiple Cell, Welded-seal, IP67



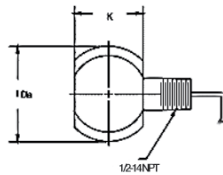
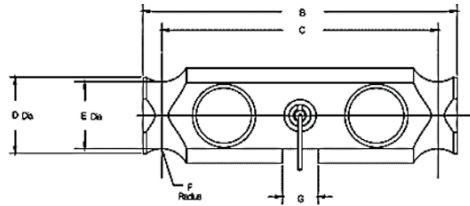
## Dimensions

Picture is a representation of actual product

Rated Capacity	B	C	D	E	F	G	K	I
lb/in								
50,000 lb	8.25	7.25	2.00	1.76	0.75	0.93	1.8	2.5
kg/mm								
22,679.6	209.55	184.15	50.8	44.7	19.00	23.6	45.72	63.50

## Order Information

Load Rating	Part#	Est. Weight	Price
50,000 lb	91765	10 lb	Consult



## Interchangeable Products

CARDINAL®  
DB50000S..... —

## Specifications

**Full Scale Output:**  
2 ± 0.1% mV/V

**Output Resistance:**  
699-707 ohms

**Input Resistance:**  
686-714 ohms

**Material/Finish:**  
Stainless steel

**Temperature:**  
Compensated Range  
14°F to 104°F/-10°C to 40°C  
Operating range  
-40°F to 150°F/-40°C to 65°C

**Safe Overload:**  
150% full scale

**Safe Sideload:**  
100% full scale

**Rated Excitation:**  
5-10 VDC (15 V DC maximum)

**Non-repeatability:**  
0.01% full scale

**Combined Error:**  
0.03% full scale

**Insulation Resistance:**  
5,000 megohms

**Deflection at Capacity:**  
50,000 lb=0.01 in (0.38 mm)

**Seal Type:**  
Environmentally sealed, NEMA Type 6P/IP67

**Cable Length:**  
35 ft (10.6 m)

**Cable Diameter:**  
0.305 polyurethane jacket

**Cable Color Code:**  
Red ..... + Excitation  
Black..... - Excitation  
White ..... - Signal  
Green ..... + Signal

**Warranty:**  
Two-year limited warranty

### Approvals:

