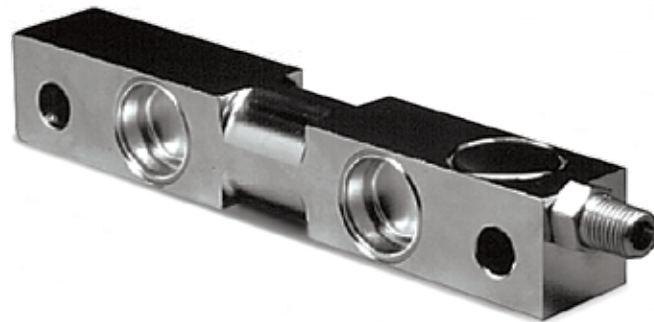


**Interchangeable Products**

- RICE LAKE WEIGHING SYSTEMS  
**RL75016 WHE** ..... page 152
- VPG CELTRON®  
**DSR-HSS** ..... page 209
- VPG SENSORTRONICS®  
**65016WH** ..... page 326

**Weigh Module Available**

- RICE LAKE WEIGHING SYSTEMS  
**RL1600 Series** page 92 and page 94



**Specifications**

- Full Scale Output:**  
3.0 mV/V nominal
- Output Resistance:**  
699-707 ohms
- Input Resistance:**  
686-714 ohms
- Material/Finish:**  
Stainless steel
- Temperature:**  
Operating range  
-40° F to 150° F (-40° C to 65° C)
- Manufacturer Model Number:**  
65016WXX-0104W
- Safe Overload:**  
150% full scale
- Safe Sideload:**  
100% full scale
- Rated Excitation:**  
5-10 VDC (15 V maximum)
- Nonlinearity:**  
0.03% full scale
- Hysteresis:**  
0.02% full scale
- Insulation Resistance:**  
5,000 megohms
- Seal Type:**  
Welded-seal, IP67
- Cable Length:**  
25 ft (7.6 m)

- Cable Diameter:**  
0.200 up to 25,000 lb,  
0.305 between 50,000 lb and 75,000 lb  
polyurethane jacket

- Cable Color Code:**  
Red .....+ Excitation  
Black .....- Excitation  
Green .....+ Signal  
White .....- Signal

- Warranty:**  
One-year limited warranty

**Approvals:**



**Dimensions**

Picture is a representation of actual product

Rated Capacity	E	G	A1	A2	B	C	CONDUIT ADAPTER	F
<b>lb/in</b>								
1,000-5,000	0.50	1.25	1.25	1.25	7.50	6.25	1/4-18 NPT	1.12
10,000-25,000	0.81	1.99	1.44	1.94	8.75	7.50	1/4-18 NPT	1.62
35,000	0.81	2.50	1.50	2.50	8.75	7.50	1/4-18 NPT	1.62
50,000	1.31	3.00	2.44	2.94	13.50	11.50	1/2-14 NPT	3.75
75,000	1.31	—	2.44	2.94	13.50	11.50	1/2-14 NPT	3.75
<b>kg/mm</b>								
453.6-2,268.0	12.7	31.8	31.8	31.8	190.5	158.8	1/4-18 NPT	28.4
4,535.9-11,339.8	20.6	50.8	36.6	49.3	222.3	190.5	1/4-18 NPT	41.1
15,876.0	—	—	—	—	—	—	—	41.1
22,679.6	33.3	76.2	62.0	74.7	342.9	292.1	1/2-14 NPT	95.2
34,019.4	33.3	—	62.0	74.7	342.9	292.1	1/2-14 NPT	95.2

**Order Information**

Load Rating	Part#	Est. Weight	Price
1,000 lb	<b>36295</b>	4 lb	Consult
1,500 lb	<b>36296</b>	4 lb	Consult
2,000 lb	<b>36297</b>	4 lb	Consult
2,500 lb	<b>36298</b>	4 lb	Consult
5,000 lb	<b>36299</b>	4 lb	Consult
10,000 lb	<b>36300</b>	7 lb	Consult
15,000 lb	<b>36301</b>	7 lb	Consult
20,000 lb	<b>36302</b>	7 lb	Consult
25,000 lb	<b>36303</b>	7 lb	Consult
50,000 lb	<b>36304</b>	27 lb	Consult
75,000 lb*	<b>36305</b>	27 lb	Consult

\*75,000 lb capacity has a square center

