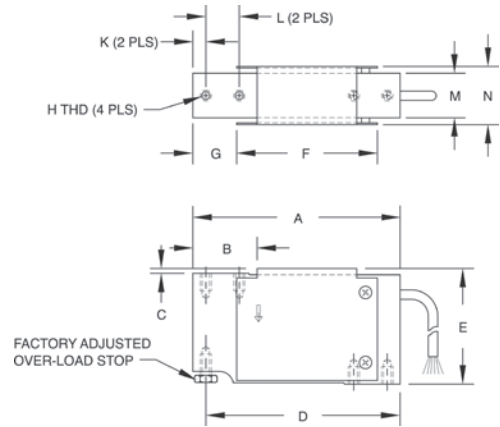


RL1010

Potted (IP65) and Unpotted Single Point, Aluminum NTEP Certified 1:5000 Class III Single Cell



Picture is a representation of actual product



Specifications

Full Scale Output: 2.0 mV/V Output Resistance: 350 (± 3) ohms, nominal Input Resistance: 415 (± 15) ohms5 Material/Finish: Anodized aluminum Temperature: Compensated range 14°F to 104°F/-10°C to 40°C Operating range -40° F to 150° F/-40° C to 65° C	Safe Overload: 150% at center of loading point, full scale Rated Excitation: 5-10 VDC (15 V maximum) Total Error: 0.02% full scale Insulation Resistance: 5,000 megohms Deflection at Capacity: 3 kg-90 kg=0.015 in (0.4 mm)	Seal Type: Potted and unpotted models available Cable Length: Potted 3.1 m (10 ft) Unpotted 0.9 m (3 ft) Cable Diameter: 0.200/PVC jacket Cable Color Code: Green + Excitation Black..... - Excitation Blue + Sense Brown - Sense Red + Signal White - Signal	Max Platform Size: 15.75 x 15.75 in Warranty: Two-year limited warranty Approvals:
---	--	--	---

Dimensions

RATED CAPACITY	A	B	C	D	E	F	G	H	K	L	M	N
lb/inches												
6.6-198.4	4.65	1.34	0.12	4.35	2.60	3.15	0.98	1/4-20 UNC x 0.50 DP	0.30	0.75	1.00	1.32
kg/mm												
3-90	118.1	34.00	3.00	110.5	66.00	80.00	25.00	1/4-20 UNC x 13 DP	7.5	19.1	25.4	33.5

Order Information

LOAD RATING		PART #	EST. SHIPPING WEIGHT	PRICE
Non-NTEP Certified, Potted				
7 kg	(15.4 lb)	17529	2 lb	Consult
10 kg	(22 lb)	17530	2 lb	Consult
15 kg	(33.1 lb)	17531	2 lb	Consult
20 kg	(44.1 lb)	17532	2 lb	Consult
30 kg	(66.1 lb)	17533	2 lb	Consult
50 kg	(110.2 lb)	17534	2 lb	Consult
90 kg	(198.4 lb)	17535	2 lb	Consult
Non-NTEP Certified, Unpotted				
3 kg	(6.6 lb)	17527	1 lb	Consult
5 kg	(11.0 lb)	17528	1 lb	Consult
NTEP Certified 1:5000, Potted				
10 kg	(22.1 lb)	50819	2 lb	Consult
15 kg	(33.1 lb)	50820	2 lb	Consult
20 kg	(44.1 lb)	50821	2 lb	Consult
30 kg	(66.1 lb)	50822	2 lb	Consult
50 kg	(110.2 lb)	50823	2 lb	Consult

Interchangeable Products

MANUFACTURER	MODEL	PAGE #
VPG TedeA-Huntleigh®	1010	335