

# Model SMA Series Miniature S-Type Load Cell (U.S. & Metric)

Why the Interface model SMA Series Miniature S-Type Load Cell is the best in class:

- Proprietary Interface temperature compensated strain gages
- Performance to 0.05%
- Small compact design
- Tension & compression



## STANDARD CONFIGURATION

5 ft. Integral Cable (SMA-nn)

## OPTIONS

Extra Cable Length  
Standardized Output

## ACCESSORIES

Instrumentation

## SPECIFICATIONS

### ACCURACY – MAX

Nonlinearity–% FS	±0.05
Hysteresis–% FS	±0.05
Nonrepeatability–% RO	±0.02
Creep, in 20 min–%	±0.05

### TEMPERATURE

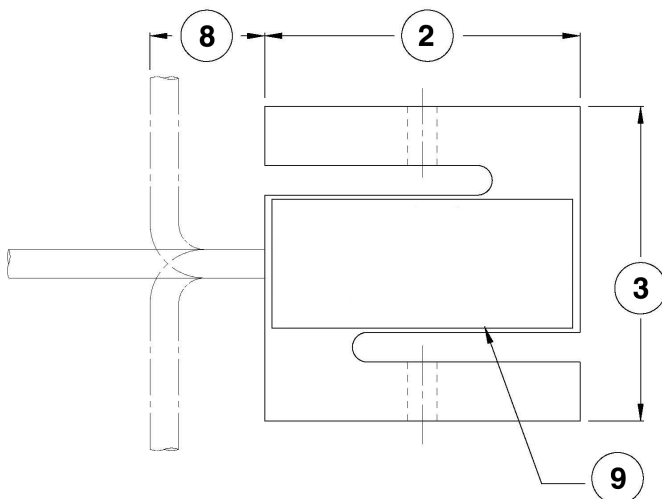
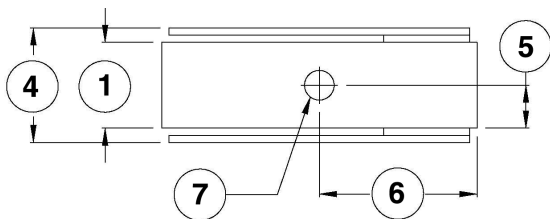
Compensated Range–°F	15 to 115
Compensated Range–°C	–10 to 45
Operating Range–°F	–65 to 200
Operating Range–°C	–55 to 90
Effect on Output–%/°F – MAX	±0.0008
Effect on Output–%/°C – MAX	±0.0014
Effect on Zero– % RO/°F – MAX	±0.005
Effect on Zero– % RO/°C – MAX	±0.009

### ELECTRICAL

Rated Output–mV/V (nominal)	2.5
Zero Balance–%RO	–0.6 to 0.0
Bridge Resistance–Ohm (nominal)	350
Excitation Voltage–MAX	15 VDC
Insulation Resistance–Megohm	>5000

### MECHANICAL

Calibration	Tension
Safe Overload–% CAP	150
Cable Length–ft	5



## DIMENSIONS

See Drawing	CAPACITY	
	US (lbf)	Metric (N)
	15, 100, 150, 200	60, 500, 600, 900
	inch	mm
(1)	0.38	9.53
(2)	1.38	35
(3)	1.38	35
(4)	0.56	14.2
(5)	0.19	4.8
(6)	0.69	17.5
(7)	#10-32 UNF – 2B	M4 X .7 – 6
(8)	0.5	12.7
(9)	Identification Label	