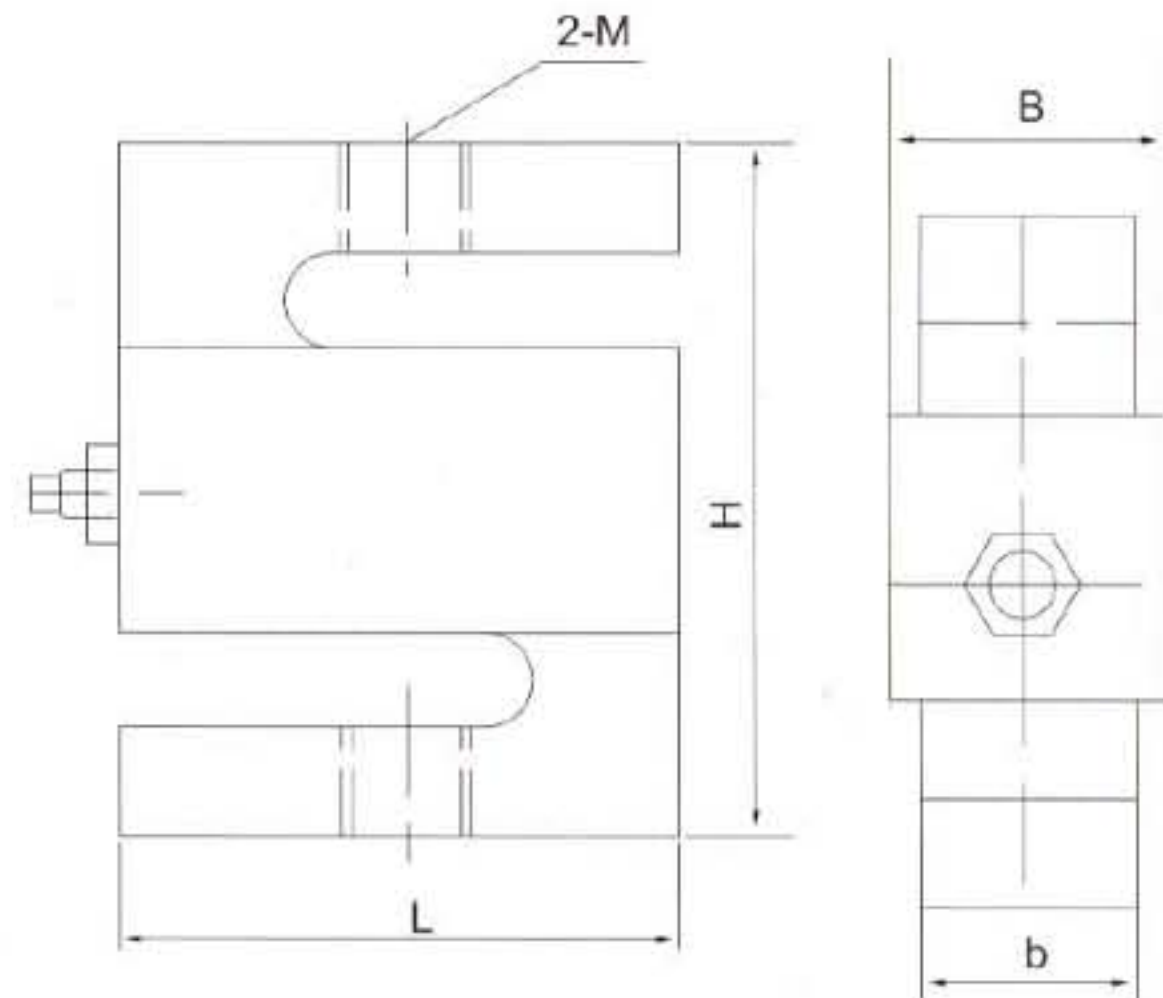


SLZ3R S-Beam Load Cell

Tool Steel/Stainless Steel



SPECIFICATIONS:

Rated Output	$3 \pm 0.01 \text{ mV/V FS}$
Nonlinearity	$\pm 0.017\% \text{ FS}$
Hysteresis	$\pm 0.02\% \text{ FS}$
Repeatability	$\pm 0.01\% \text{ FS}$
Creep	$\pm 0.02\% \text{ FS/30min}$
Zero Balance	$\pm 1\% \text{ FS}$
Temperature Effect On Zero	$\pm 0.02\% \text{ FS/10}^\circ\text{C}$
Temperature Effect On Rated Output	$\pm 0.02\% \text{ FS/10}^\circ\text{C}$
Input Resistance	$350 \pm 3.5 \Omega$
Output Resistance	$350 \pm 3.5 \Omega$
Insulation Resistance	$\geq 5000 \text{ M}\Omega$
Excitation Voltage	10(Recommended), 18(Max)VDC
Compensated Temperature Range	$-10 \text{ to } +40^\circ\text{C}$
Operating Temperature Range	$-35 \text{ to } +65^\circ\text{C}$
Safe Overload	150% FS
Ultimate Overload	300% FS
Protection Class	IP 67
Cable Length	(25~750kg) 3m, 6m
Cable Color Code	Red +Excitation, Black -Excitation, Green +Signal, White -Signal

DIMENSIONS:

mm

Capacity kg	M	B	b	L	H
25~50	M8x1.25	14.50	12.70	50.80	76.20
100~150	M10x1.50	20.80	19.00	50.80	76.20
200~750	M12x1.75	20.80	19.00	50.80	76.20
1~1.5t	M12x1.75	27.20	25.40	50.80	76.20
2~5t	M20x1.50	27.20	25.40	76.20	101.60
7.5~10t	M33x3.00	/	50.00	125.00	175.00

Dimensions and specifications are subject to change without notice.



<http://www.sensolink.com> E-mail: sales@sensolink.com