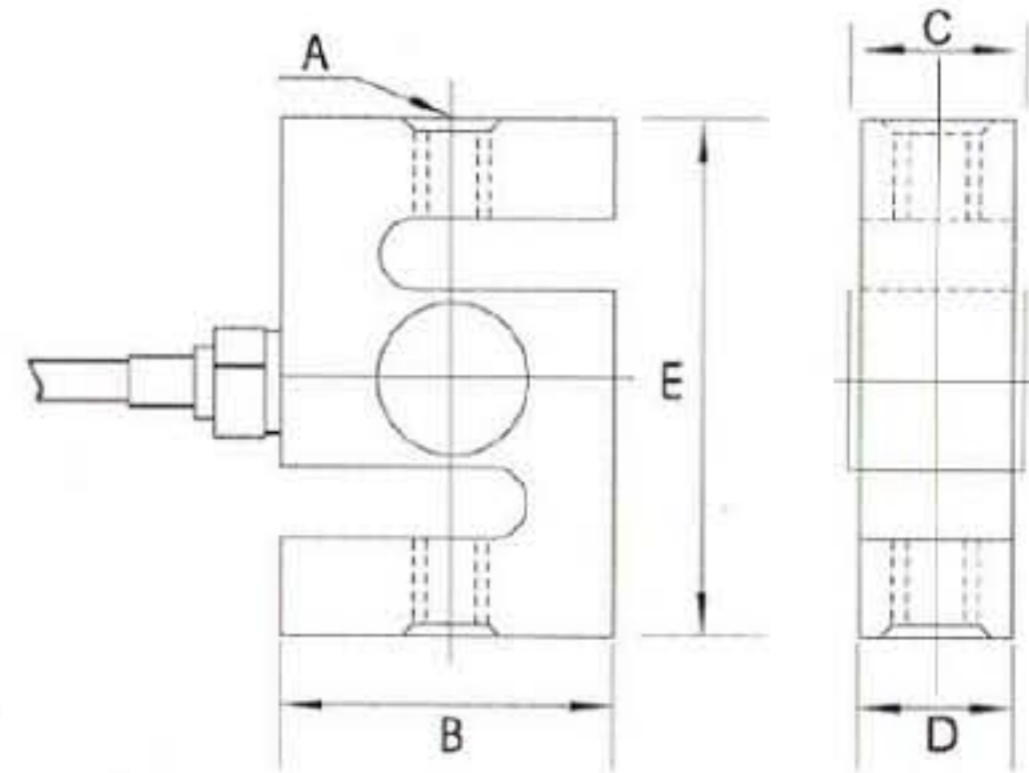


SLZ3C S-Type Load Cell Alloy Steel/Stainless Steel



SPECIFICATIONS:

Rated Output	3mV/V ± 0.25% FS
Nonlinearity	± 0.02% FS
Hysteresis	± 0.02% FS
Repeatability	± 0.02% FS
Creep	± 0.03% FS/20min
Zero Balance	± 1% FS
Temperature Effect On Zero	± 0.0015% FS/10°C
Temperature Effect On Rated Output	± 0.0010% FS/10°C
Input Resistance	385 ± 5 Ω
Output Resistance	350 ± 3 Ω
Insulation Resistance	≥ 5000M Ω
Excitation Voltage	10(Recommended), 15(Max)VDC/AC
Compensated Temperature Range	-10 to +40°C
Operating Temperature Range	-20 to +60°C
Safe Overload	150% FS
Ultimate Overload	300% FS
Protection Class	IP 67
Cable Length	16.4'/5m
Cable Color Code	Red +Excitation, Black -Excitation, Green +Signal, White -Signal

DIMENSIONS:

Capacity		inches/mm									
		A		B		C		D		E	
Lb	kg	inch	mm	inch	mm	inch	mm	inch	mm	inch	mm
	25/50/75Kg	1/4-28UNF	M6 x 1.0	2.00	50.8	0.75	19.1	0.50	12.7	2.50	63.5
	100Kg		M10 x 1.5	2.00	50.8	1.00	25.4	0.75	19.1	3.00	76.2
250/300Lb		3/8-24UNF		2.00	50.8	0.75	19.1	0.50	12.7	3.00	76.2
500/750/1K/1.5KLb	250/500/750Kg	1/2-20UNF	M12 x 1.75	2.00	50.8	1.00	25.4	0.75	19.1	3.00	76.2
2K/2.5K/3KLb	1000/1500Kg	1/2-20UNF	M12 x 1.75	2.00	50.8	1.25	31.8	1.00	25.4	3.00	76.2
5K/7.5KLb		3/4-16UNF		3.00	76.2	1.25	31.8	1.00	25.4	4.25	107.9
	2000/2500/5000Kg		M20 x 1.5	3.00	76.2	1.50	38.1	1.25	31.8	3.95	100.4
10KLb		3/4-16UNF		3.50	88.9	1.25	31.8	1.00	25.4	4.75	120.7
15KLb		1-14UNS		3.95	100.3	1.50	38.1	1.25	31.8	5.50	139.7
20KLb		1 1/4-12UNF		4.94	125.5	2.19	55.7	1.94	49.3	7.00	177.8
40KLb		1 1/2-12UNF		6.00	152.4	2.75	69.9	2.50	63.5	10.00	254.0

Dimensions and specifications are subject to change without notice.



<http://www.sensolink.com> E-mail: sales@sensolink.com