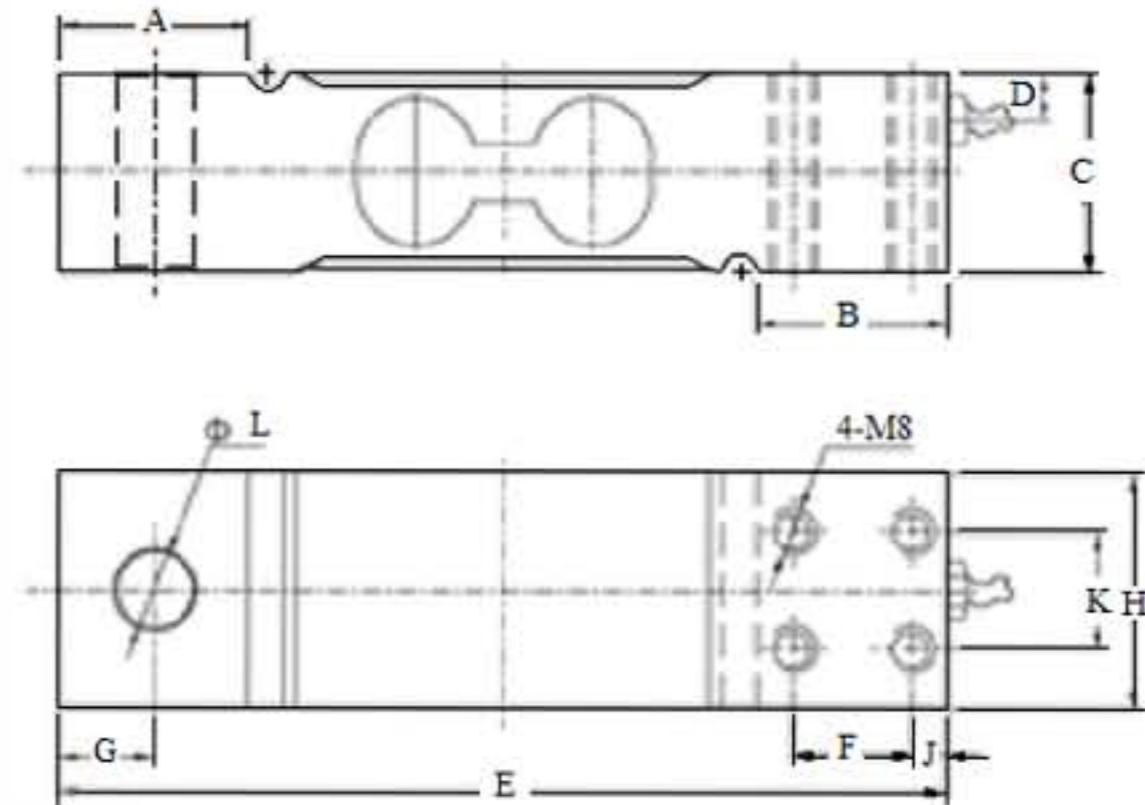
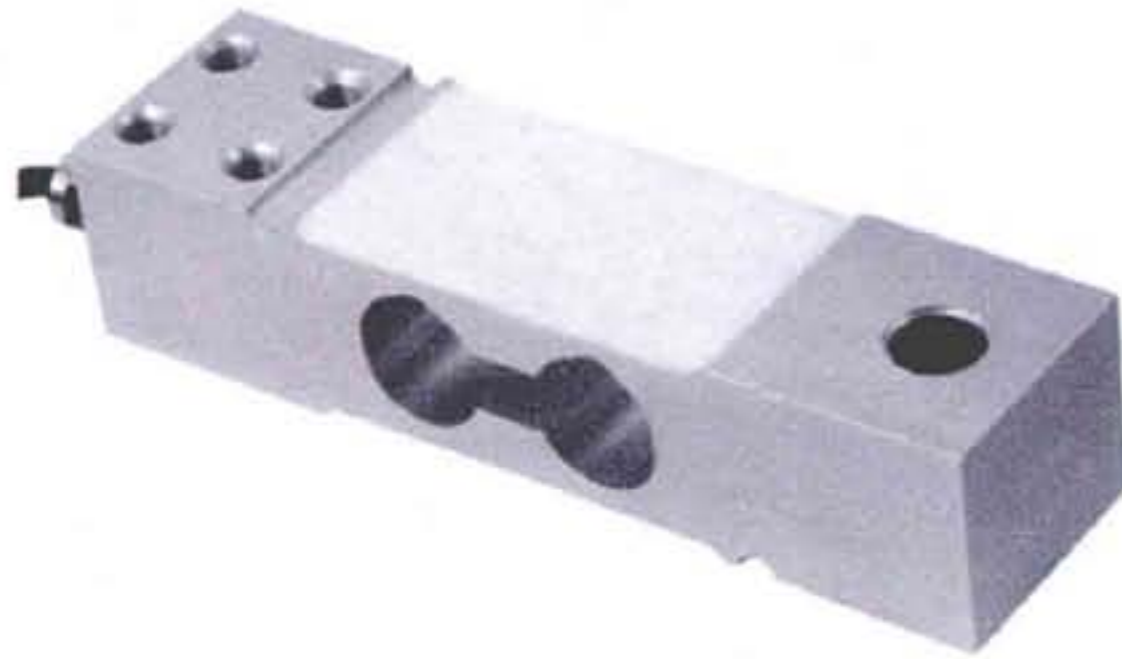


SLS7

Single Point Load Cell

Aluminium



SPECIFICATIONS:

Rated Output	2.0mV/V ± 10% FS
Nonlinearity	± 0.02% FS
Hysteresis	± 0.02% FS
Repeatability	± 0.02% FS
Creep	± 0.02% FS/30min
Zero Balance	± 5% FS
Temperature Effect On Zero	± 0.023% FS/10°C
Temperature Effect On Rated Output	± 0.014% FS/10°C
Input Resistance	420 ± 30 Ω
Output Resistance	350 ± 5 Ω
Insulation Resistance	≥ 2000M Ω
Excitation Voltage	10(Recommended), 15(Max)VDC/AC
Compensated Temperature Range	-10 to +40°C
Operating Temperature Range	-30 to +70°C
Safe Overload	150% FS
Ultimate Overload	200% FS
Protection Class	IP 67
Cable Length	6 m
Cable Color Code	Red + Excitation, Black -Excitation, Green +Signal, White -Signal

DIMENSIONS:

mm

Capacity	A	B	C	D	E	F	G	H	J	K	L
Kg											
60/100/150/250	32	32	34	8	150	20	16	40	6	20	13

Dimensions and specifications are subject to change without notice.



<http://www.sensolink.com> E-mail: sales@sensolink.com