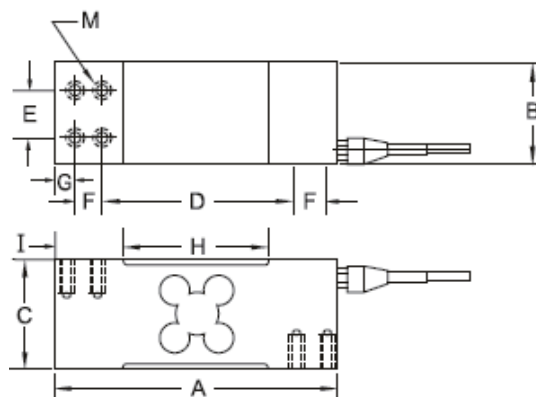
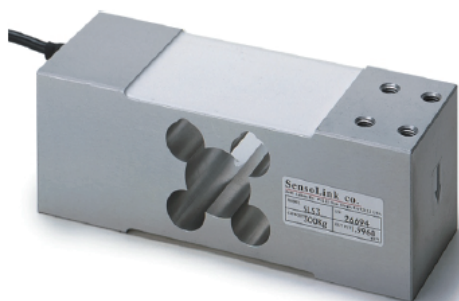


SLS3

Single Point Load Cell



SPECIFICATIONS

Rated Output	$2 \pm 0.1 \text{mV/V FS}$	Temperature Shift On Zero	$\pm 0.02\% \text{ FS}/10^\circ\text{C}$
Nonlinearity	$\pm 0.02\% \text{ FS}$	Temperature Shift On Rated Output	$\pm 0.02\% \text{ FS}/10^\circ\text{C}$
Hysteresis	$\pm 0.02\% \text{ FS}$	Excitation Voltage-VDC MAX	15V
Repeatability	$\pm 0.01\% \text{ FS}$	Compensated Temperature Range	-10 to +50 °C
Creep	$\pm 0.02\% \text{ FS}/30\text{min}$	Operating Temperature Range	-20 to +60 °C
Zero Balance	$\pm 1\% \text{ FS}$	Safe Overload	150% FS
Input Resistance	$420 \pm 10 \Omega$	Ultimate Overload	300% FS
Output Resistance	$350 \pm 3 \Omega$	Protection Class	IP65
Insulation Resistance	$\geq 5000 \text{M}\Omega$	Cable Length	9.8'/3m
Material	Aluminum	Max Platform	600*600mm
Cable Color Code	Red +Excitation, Black -Excitation, Green +Signal, White -Signal		

DIMENSIONS

Capacities	mm									
kg	A	B	C	D	E	F	G	H	I	M
100, 150										
250, 300	174	60	65	122	30	19	7	89	42	8*M8
500										23dp

Dimensions and specifications are subject to change without notice.



San Diego, CA USA

<http://www.sensolink.com>

E-mail: sales@sensolink.com