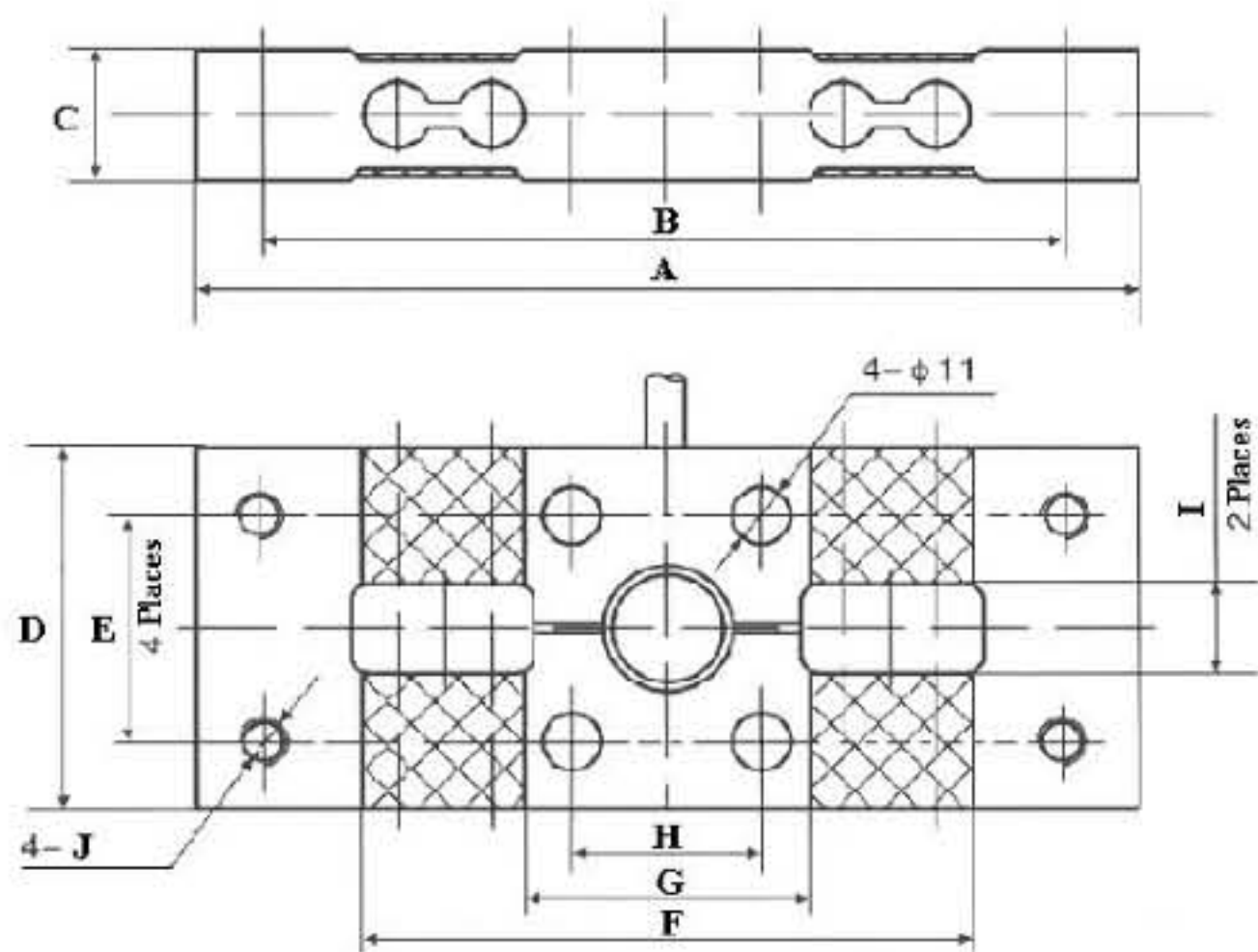


# SLS16 Double parallel Load Cell Aluminum



## SPECIFICATIONS:

Rated Output	2.2 ± 0.3 mV/V FS
Nonlinearity	± 0.1% FS
Hysteresis	± 0.1% FS
Repeatability	± 0.05% FS
Creep	± 0.1% FS/30min
Zero Balance	± 2% FS
Temperature Effect On Zero	± 0.1% FS/10°C
Temperature Effect On Rated Output	± 0.1% FS/10°C
Input Resistance	1450 ± 50 Ω
Output Resistance	1400 ± 20 Ω
Insulation Resistance	≥ 5000 MΩ
Excitation Voltage	10 (Recommended), 18 (Max) VDC/AC
Compensated Temperature Range	-10 to +40°C
Operating Temperature Range	-35 to +65°C
Safe Overload	150% FS
Ultimate Overload	300% FS
Protection Class	IP 65
Cable Length	6m
Cable Color Code	Red + Excitation, Black -Excitation, Green + Signal, White -Signal
Max Platform	600x600mm

## DIMENSIONS:

mm

Capacity	A	B	C	D	E	F	G	H	I	J
kg										
500	201	171	29	80	50	131	61	40	20	M 10

Dimensions and specifications are subject to change without notice.



<http://www.sensolink.com> E-mail: [sales@sensolink.com](mailto:sales@sensolink.com)