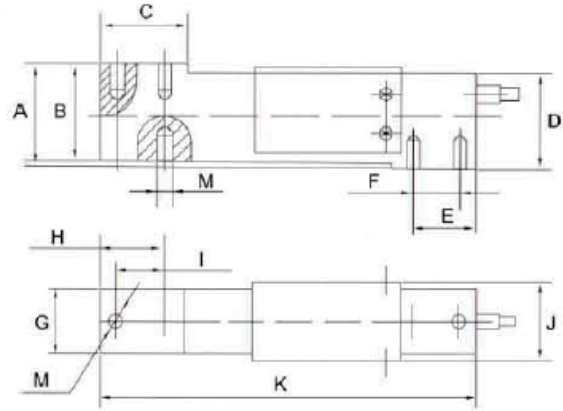


SLS11 Single Point Load Cell



SPECIFICATIONS

Rated Output	$2 \pm 0.2 \text{ mV/V FS}$	Temperature Shift On Zero	$\pm 0.02\% \text{ FS}/10^\circ\text{C}$
Nonlinearity	$\pm 0.017\% \text{ FS}$	Temperature Shift On Rated Output	$\pm 0.02\% \text{ FS}/10^\circ\text{C}$
Hysteresis	$\pm 0.02\% \text{ FS}$	Excitation Voltage-VDC MAX	18V
Repeatability	$\pm 0.01\% \text{ FS}$	Compensated Temperature Range	-10 to +40 °C
Creep	$\pm 0.02\% \text{ FS}/30\text{min}$	Operating Temperature Range	-35 to +65 °C
Zero Balance	$\pm 1\% \text{ FS}$	Safe Overload	150% FS
Input Resistance	$383 \pm 4 \Omega$	Ultimate Overload	300% FS
Output Resistance	$350 \pm 3.5 \Omega$	Protection Class	IP67
Insulation Resistance	$\geq 5000 \text{ M}\Omega$	Cable Length	1m
Material	Stainless Steel	Max Platform	400*400mm
Cable Color Code	Green +Excitation, Black -Excitation, White +Signal, Red -Signal, Yellow +Sense, Blue -Sense		

DIMENSIONS

mm

Capacities	A	B	C	D	E	F	G	H	I	J	K	M
kg												
15, 20, 30												
50, 75, 100	40	38	34	38	25	19	25.4	25	19	31.3	150	M6
150, 200												

Dimensions and specifications are subject to change without notice.



San Diego, CA USA

<http://www.sensolink.com>

E-mail: sales@sensolink.com