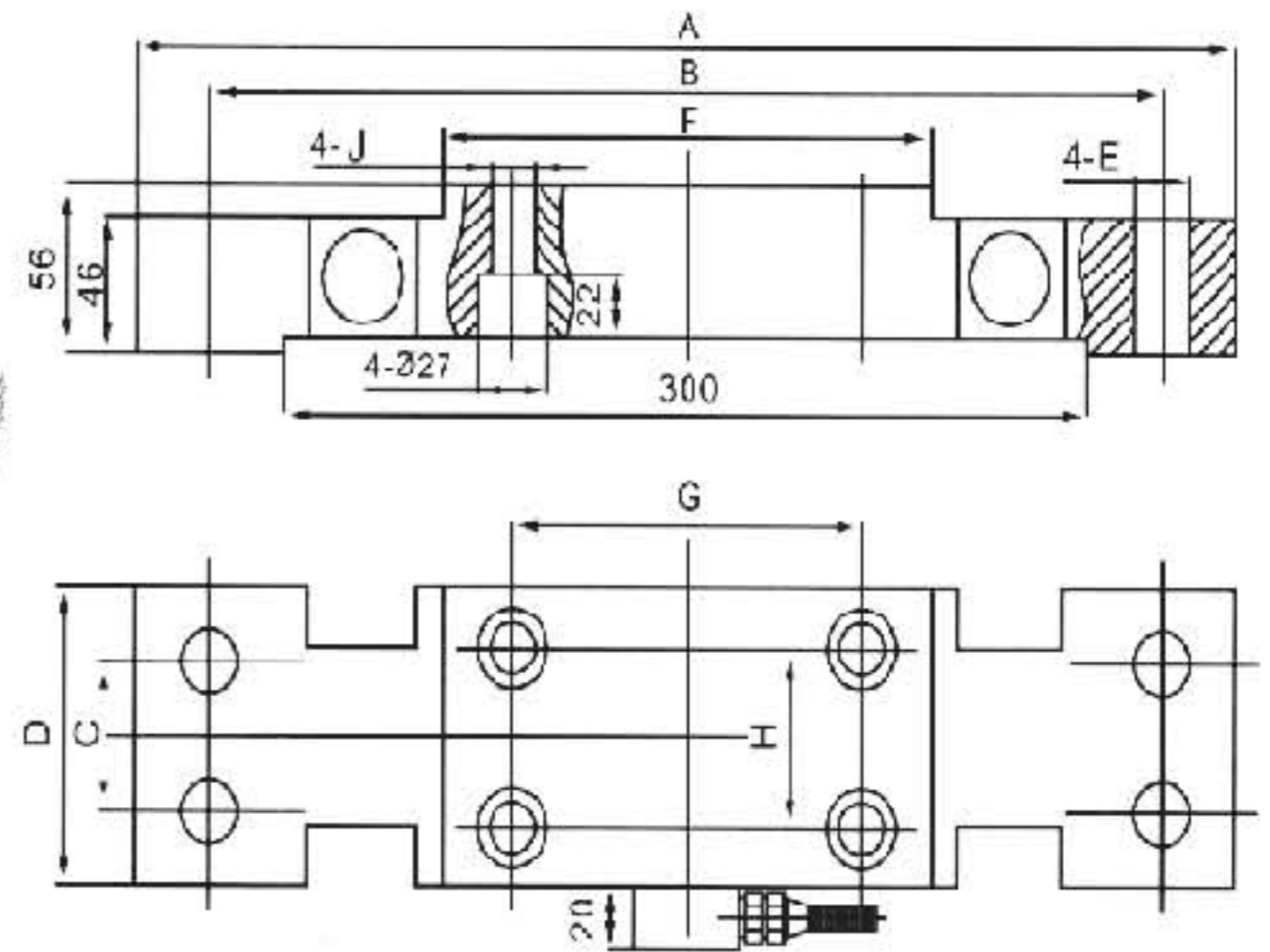
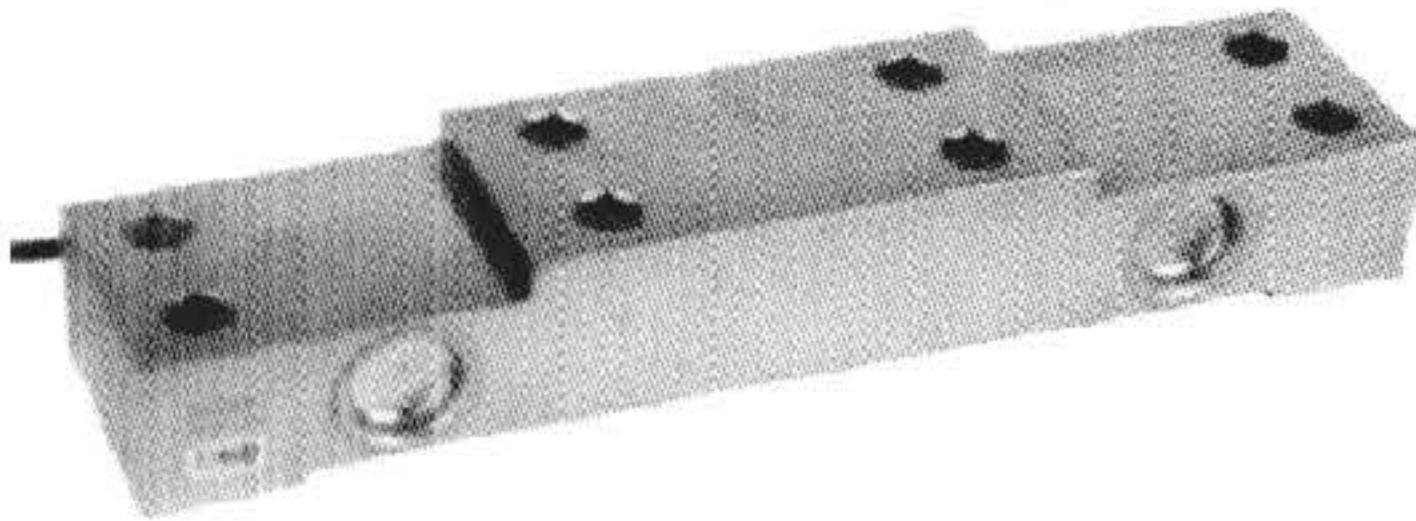


SLD6 Double-Ended Beam Load Cell Alloy steel



SPECIFICATIONS :

Rated Output	1.2 ± 0.002 mV/VFS
Nonlinearity	± 0.2% FS
Hysteresis	± 0.2% FS
Repeatability	± 0.2% FS
Creep	± 0.05% FS/30min
Zero Balance	± 1% FS
Temperature Effect On Zero	± 0.03% FS/10°C
Temperature Effect On Rated Output	± 0.03% FS/10°C
Input Resistance	750 ± 10 Ω
Output Resistance	702 ± 3 Ω
Insulation Resistance	≥ 5000 MΩ
Excitation Voltage	10 (Recommended), 15 (Max) VDC/AC
Compensated Temperature Range	-10 to +40°C
Operating Temperature Range	-30 to +70°C
Safe Overload	150% FS
Ultimate Overload	250% FS
Protection Class	IP 68
Cable Length	2m
Cable Color Code	Red + Excitation, Black - Excitation, Green + Signal, White - Signal

DIMENSIONS :

Capacity	A	B	C	D	E	F	G	H	J
t									
1.5	350	310	38	75	Ø18	151	100	40	Ø17.5
2.5	410	355	50	100	Ø21.5	181	130	60	Ø17
4~10	410	355	50	100	Ø21.5	211	160	60	Ø17

Dimensions and specifications are subject to change without notice.



<http://www.sensolink.com> E-mail: sales@sensolink.com