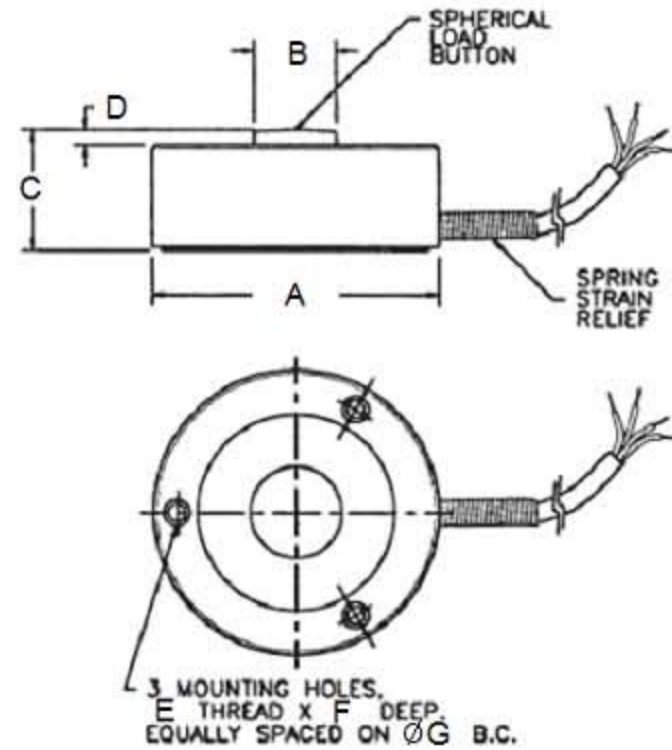


SLC6

Compression Load Cell

Stainless Steel



SPECIFICATIONS:

Rated Output	$2 \pm 0.1\text{mV/V FS}$
Nonlinearity	$\pm 0.25\% \text{ FS}$
Hysteresis	$\pm 0.3\% \text{ FS}$
Repeatability	$\pm 0.1\% \text{ FS}$
Creep	$\pm 0.05\% \text{ FS}/30\text{min}$
Zero Balance	$\pm 1.0\% \text{ FS}$
Temperature Effect On Zero	$\pm 0.1\% \text{ FS}/10^\circ\text{C}$
Temperature Effect On Rated Output	$\pm 0.1\% \text{ FS}/10^\circ\text{C}$
Input Resistance	$350 \pm 5\Omega$
Output Resistance	$350 \pm 5\Omega$
Insulation Resistance	$\geq 5000\text{M}\Omega (50\text{VDC})$
Excitation Voltage	10VDC/AC
Compensated Temperature Range	$-10 \text{ to } +50^\circ\text{C}$
Operating Temperature Range	$-20 \text{ to } +60^\circ\text{C}$
Safe Overload	$150\% \text{ FS}$
Ultimate Overload	$200\% \text{ FS}$
Protection Class	$\text{IP } 66$
Cable Length	$\varnothing 1.2\text{mm} \times 1\text{m}$
Cable Color Code	Red + Excitation, Black -Excitation, Green + Signal, White -Signal

DIMENSIONS:

Capacity	A	B	C	D	E	F	G
Lb							
5/10/25/50	25.4	5.33	15.75	1.27	#4-40 UNC	5.59	19.05
100/250	31.75	8.13	9.91	1.78	#6-32 UNC	6.35	25.4
500/1000	38.1	10.16	16.0	2.03	#6-32 UNC	6.35	31.75
100/250	50.8	15.24	25.4	3.05	#6-32 UNC	6.35	41.28
500/1000	76.2	19.81	38.1	4.57	#6-32 UNC	6.35	60.33

Dimensions and specifications are subject to change without notice.



<http://www.sensolink.com> E-mail: sales@sensolink.com