

Coti, Inc. • 122 Export Circle • Huntsville, Alabama 35806 • Toll Free: 1-888-268-4462 • Fax: 256-859-5024 • www.cotiinc.com



CISB ORDER INFORMATION DISCOUNT C SUGGESTED LIST PRICE

*25 lb, 50 lb		\$ 165.00
100 lb, 150 lb, 200 lb		\$ 165.00
250 lb, 300 lb, 500 lb, 750 lb		\$ 165.00
1K, 1.5K, 2K, 2.5K, 3K		\$ 165.00
5K, 10K		\$ 325.00
15K		\$ 455.00
20K		\$ 685.00
*40K		\$ 955.00
*Non-NTEP		

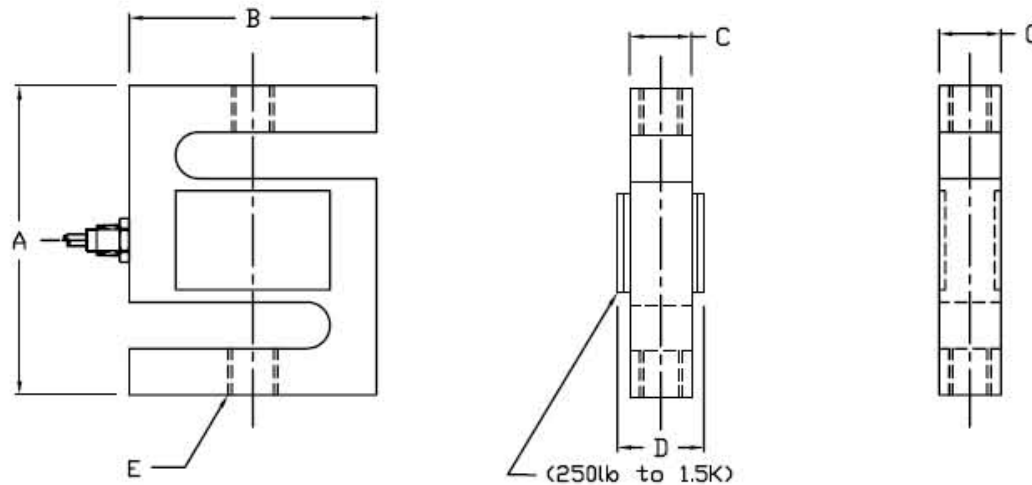
INTERCHANGEABLE PRODUCTS

Rice Lake Weighing Systems.....	RL20001, RL20000
Revere Transducers.....	9363
Sensortronics.....	60001,60036
Celtron.....	STC

WEIGH MODULE AVAILABLE

COTI.....	ITCM
-----------	------

Main Dimensions and Accessories



RATED CAPACITY	DIMENSIONS					
	A	B	C	D	E	
25lb-50lb	2.50	2.00	0.50	1.00	1/4-28UNF	
100lb-200lb	2.50	2.00	0.50	0.75	1/4-28UNF	
250lb-300lb	3.00	2.00	0.50	0.75	3/8-24UNF	
500lb-1.5K	3.00	2.00	0.75	1.00	1/2-20UNF	
2K-3K	3.00	2.00	1.00	-	1/2-20UNF	
5K	4.25	2.25	1.00	-	3/4-16UNF	
10K	4.25	3.00	1.00	-	3/4-16UNF	
15K	5.50	3.95	1.25	-	1-14UNF	
20K	7.00	5.00	2.00	-	1 1/4-12UNF	
40K	7.50	5.50	2.50	-	1 1/2-12UNF	

▶ SPECIFICATIONS ◀

Rated Output (mV/V)	3.00	Bridge Resistance	350
Nonlinearity	+/- 0.02% FS	Insulation Resistance	2000 Megohms
Hysteresis	+/- 0.02% FS	Excitation Voltage	10V AC/DC (15V Max)
Repeatability	+/- 0.01% FS	Compensated Temperature Range	-10°C - +40°C
Creep (30 minutes)	+/- 0.02% FS	Operating Temperature Range	-20°C - +60°C
Zero Balance	+/- 1.00% FS	Safe Overload	150% FS
Temperature Effect on Zero	+/- 0.02% FS/10° C	Cable Length	20' Standard Cable
Temperature Effect on Output	+/- 0.02% FS/10° C	Seal Type	Environmentally-Sealed, IP67
Cable Color Code	Input Green +Excitation Black -Excitation	Output White +Signal Red -Signal	