

# ▶ CI-50

▶ **SINGLE POINT**

▶ **ALUMINUM**  
NTEP 1:5,000 Class ■ Single Cell

Coti, Inc. • 122 Export Circle • Huntsville, Alabama 35806 • Toll Free: 1-888-268-4462 • Fax: 256-859-5024 • www.cotiinc.com



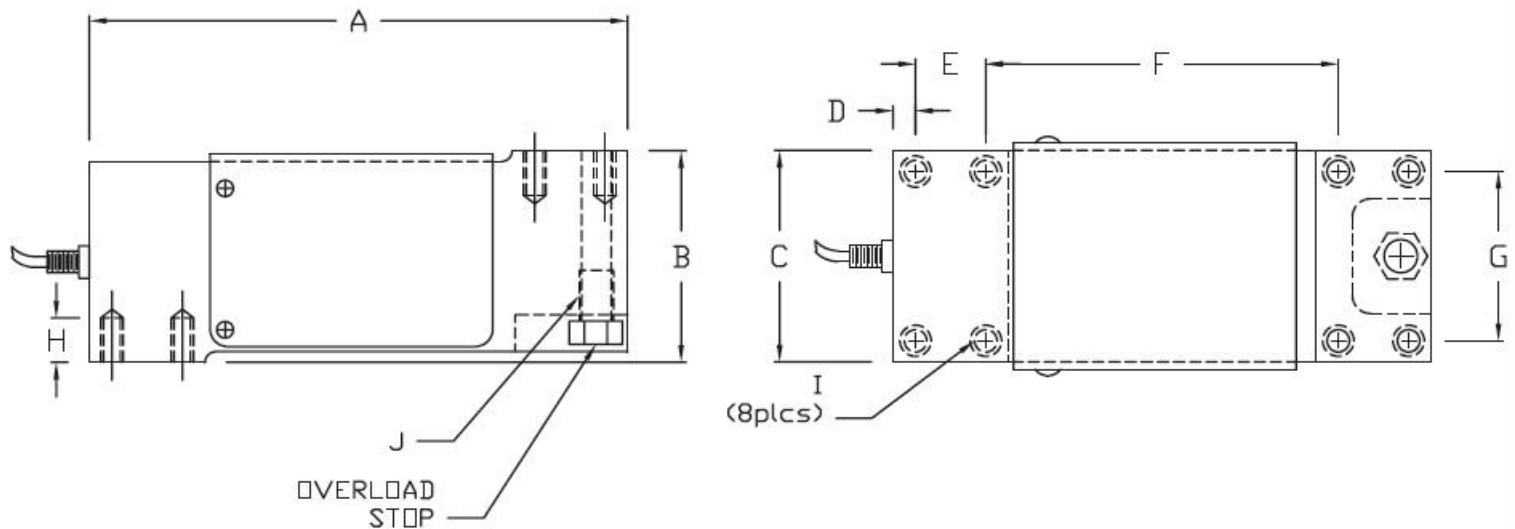
## CI-50 ORDER INFORMATION

DISCOUNT C SUGGESTED LIST PRICE  
50 kg, 75 kg, 100 kg, 150 kg, 200 kg  
250 kg  
300 kg  
500 kg  
\*635 kg  
\*1000 kg  
\* NON-NTEP

## INTERCHANGEABLE PRODUCTS

Rice Lake Weighing Systems.....	RL1250
Tedea-Huntleigh.....	1250
Revere .....	652
Flintec.....	PCB
Celtron.....	LOC
HBM.....	PW12
Sensortronic.....	60060

Main Dimensions and Accessories



RATED CAPACITY	DIMENSIONS									
	A	B	C	D	E	F	G	H	I	J
50 to 1000KG	7.50	2.95	2.95	0.31	0.98	4.91	2.36	0.62	5/16-18UNC	1/2-20UNF

## ▶ SPECIFICATIONS ◀

Rated Output (mV/V)	2.00	Bridge Resistance	350
Nonlinearity	+/- 0.02% FS	Insulation Resistance	5000 Megohms
Hysteresis	+/- 0.02% FS	Excitation Voltage	10V AC/DC (15V Max)
Repeatability	+/- 0.01% FS	Compensated Temperature Range	-10°C - +40°C
Creep (30 minutes)	+/- 0.02% FS	Operating Temperature Range	-20°C - +60°C
Zero Balance	+/- 1.00% FS	Safe Overload	150% FS
Temperature Effect on Zero	+/- 0.02% FS/10° C	Cable Length	10' 6 Conductor Cable
Temperature Effect on Output	+/- 0.02% FS/10° C	Seal Type	Environmentally-Sealed, Potted, IP67
Cable Color Code	Input	Output	Sense Leads
	Green +Excitation	White +Signal	Blue +Sense
	Black -Excitation	Red -Signal	Brown -Sense