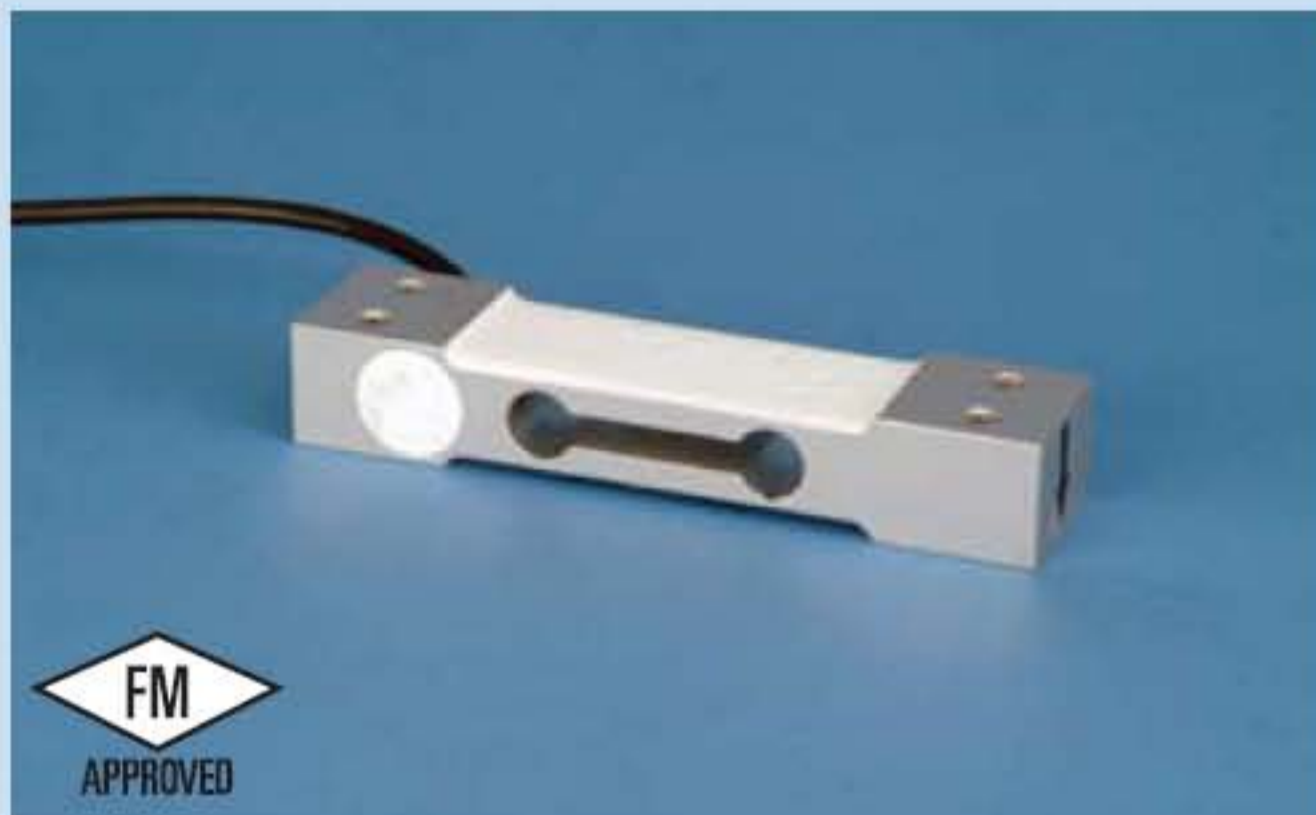


# ▶ CI-22

▶ **SINGLE POINT**

▶ **ALUMINUM**  
Environmentally Sealed

Coti, Inc. • 122 Export Circle • Huntsville, Alabama 35806 • Toll Free: 1-888-268-4462 • Fax: 256-859-5024 • www.cotiinc.com



## CI-22 ORDER INFORMATION

- 3 kg
- \*5 kg
- \*7 kg
- 10 kg
- 15 kg
- 20 kg
- 30 kg
- \*60 kg
- \*75 kg
- \*100 kg

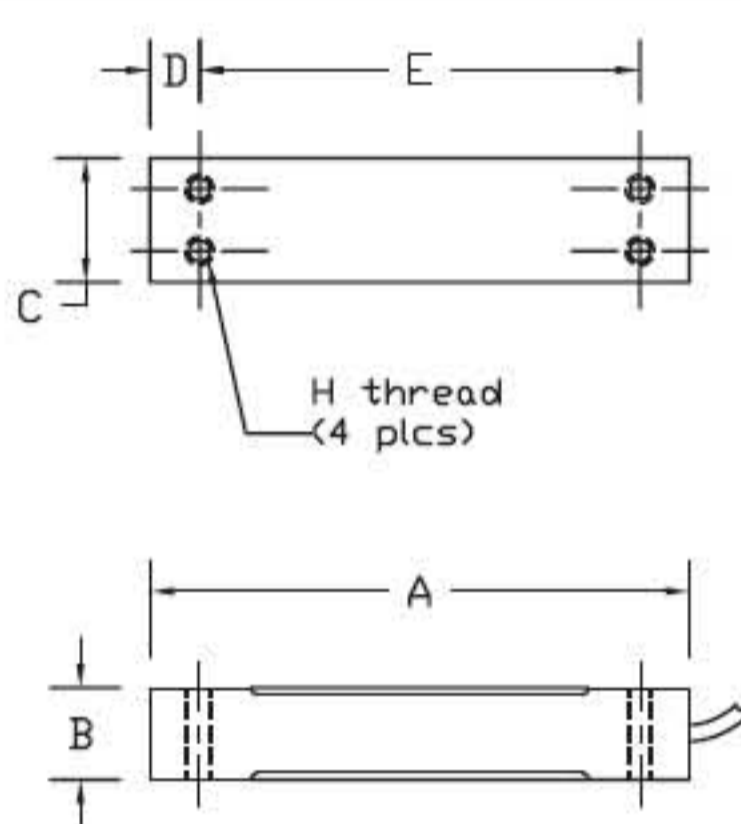
\* NON-NTEP

DISCOUNT C SUGGESTED LIST PRICE

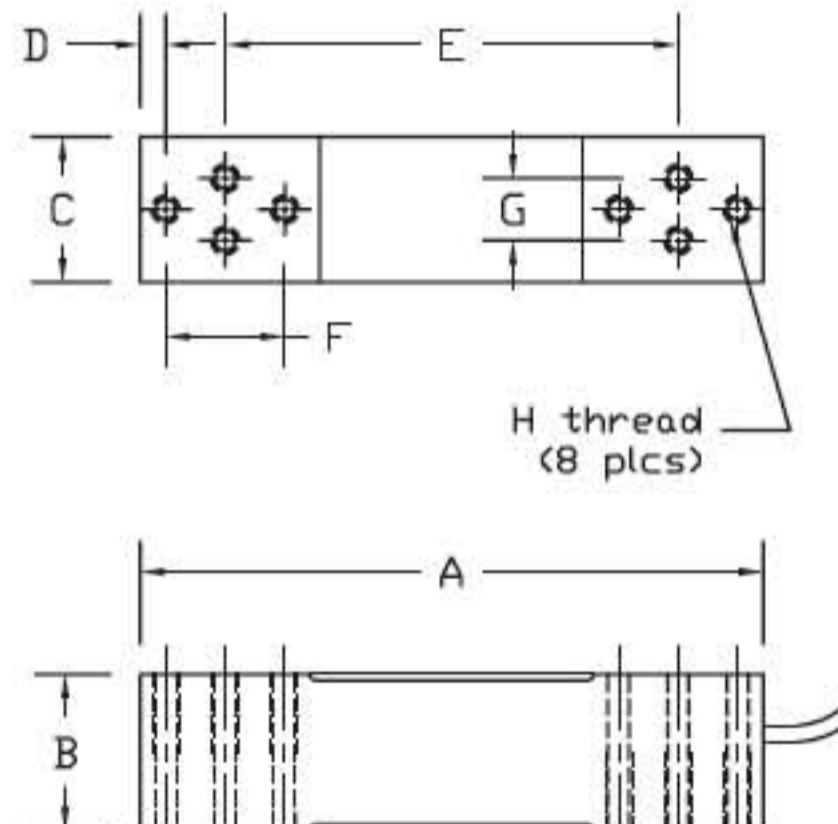
## INTERCHANGEABLE PRODUCTS

Rice Lake Weighing Systems.....	RL1521
BLH .....	C2G1
Fairbanks .....	4900 Series Checkweighers
NMB .....	C2G1
Tedea-Huntleigh.....	1022
Celtron.....	LPS

Main Dimensions and Accessories



3 KG to 30KG



60KG to 100KG

RATED CAPACITY	DIMENSIONS										
	A	B	C	D	E	F	G	H			
3KG	2.76	0.87	0.47	0.24	2.28	-	0.28	M3			
5KG-30KG	5.12	0.87	1.18	0.48	4.17	-	0.59	M6			
60KG-100KG	5.91	1.57	1.38	0.28	4.61	0.75	0.59	M6			

## ▶ SPECIFICATIONS ◀

Rated Output (mV/V)	2,00	Bridge Resistance	350
Nonlinearity	+/- 0.02% FS	Insulation Resistance	5000 Megohms
Hysteresis	+/- 0.02% FS	Excitation Voltage	10V AC/DC (15V Max)
Repeatability	+/- 0.01% FS	Compensated Temperature Range	-10°C - +40°C
Creep (30 minutes)	+/- 0.02% FS	Operating Temperature Range	-20°C - +60°C
Zero Balance	+/- 1.00% FS	Safe Overload	150% FS
Temperature Effect on Zero	+/- 0.02% FS/10° C	Cable Length	10' Standard Cable
Temperature Effect on Output	+/- 0.02% FS/10° C	Seal Type	Environmentally Sealed, IP67
Cable Color Code	Input Green +Excitation Black -Excitation	Output White +Signal Red -Signal	