

▶ CI-58

▶ **DOUBLE-ENDED BEAM**

▶ **ALLOY STEEL**

NTEP 1:10,000 Class **ML** Multiple Cell

Coti, Inc. • 122 Export Circle • Huntsville, Alabama 35806 • Toll Free: 1-888-268-4462 • Fax: 256-859-5024 • www.cotiinc.com



CI-58 ORDER INFORMATION

DISCOUNT C

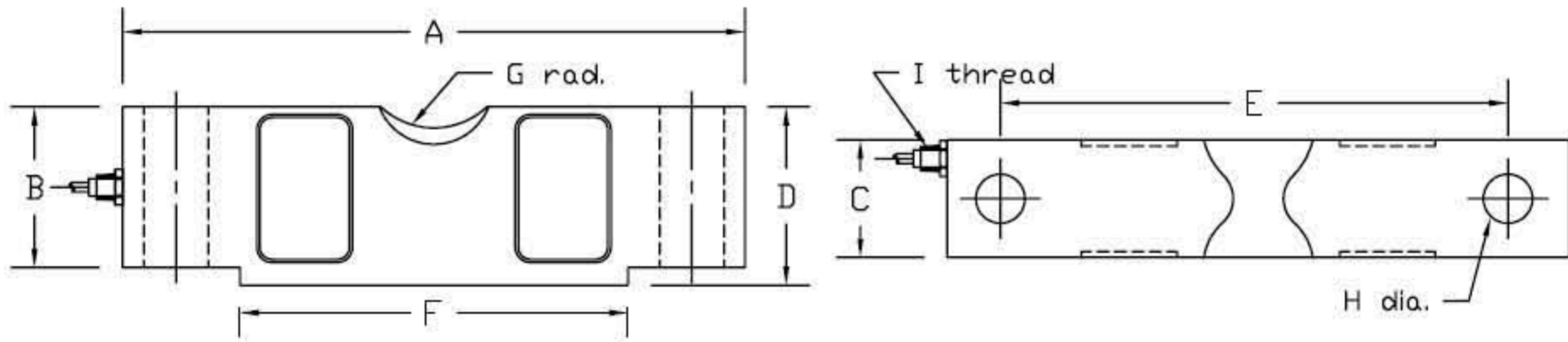
SUGGESTED LIST PRICE

- *10K, 20K
- 25K
- 40K, 50K SE
- 50K, 60K, 75K
- 100K, 125K
- *NON-NTEP

INTERCHANGEABLE PRODUCTS

Rice Lake Weighing Systems.....	RL75058
Sensortronics.....	65058
Tedea.....	4158
Celtron.....	CLB

Main Dimensions and Accessories



RATED CAPACITY	DIMENSIONS										
	A	B	C	D	E	F	G	H	I		
10K-25K	7.75	1.70	1.69	1.94	6.50	5.00	0.75	0.68	1/4-18		
40K-50KSE	10.25	2.10	1.94	2.44	8.50	6.39	1.00	0.81	1/2-14		
50K-75K	10.25	2.62	2.44	2.94	8.50	6.39	1.00	1.06	1/2-14		
100K-125K	15.25	3.43	2.90	3.86	12.75	9.00	1.50	1.62	1/2-14		

▶ SPECIFICATIONS ◀

Rated Output (mV/V)	3.00	Bridge Resistance	700
Nonlinearity	+/- 0.02% FS	Insulation Resistance	5000 Megohms
Hysteresis	+/- 0.02% FS	Excitation Voltage	10V AC/DC (15V Max)
Repeatability	+/- 0.01% FS	Compensated Temperature Range	-10°C - +40°C
Creep (30 minutes)	+/- 0.02% FS	Operating Temperature Range	-20°C - +60°C
Zero Balance	+/- 1.00% FS	Safe Overload	150% FS
Temperature Effect on Zero	+/- 0.02% FS/10° C	Cable Length:	50' Braided Shield Cable
Temperature Effect on Output	+/- 0.02% FS/10° C	Seal Type	Environmentally-Sealed, IP67
Cable Color Code	Input Green +Excitation Black -Excitation	Output White +Signal Red -Signal	