

## 2400 HIGH CAPACITY STANDARD STAINLESS STEEL LOAD CELL (US & METRIC)

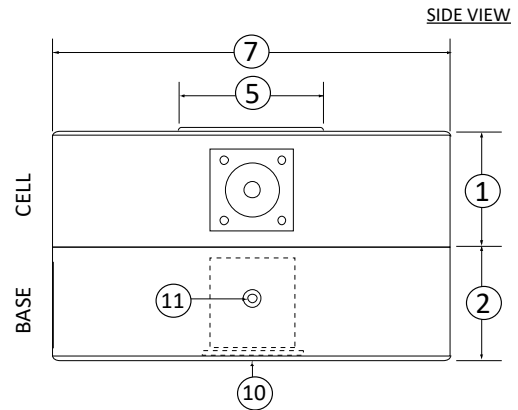
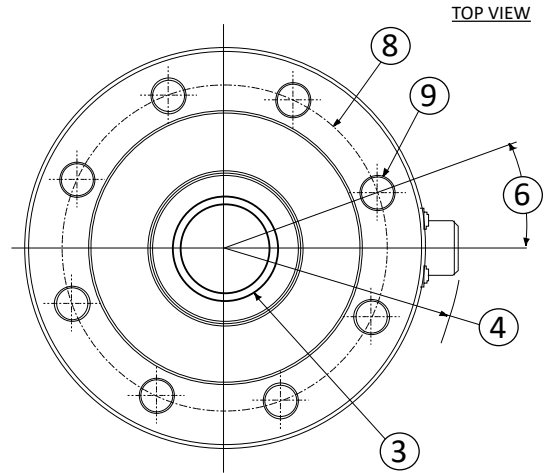
### FEATURES & BENEFITS

- Capacities from 7.5K to 300K lbf (33.4 to 1350 kN)
- Proprietary Interface temperature compensated strain gages
- Welded diaphragm
- Tension & compression
- Compact size
- Counterbored mounting holes in 10K lbf (44.5 kN) model

### STANDARD CONFIGURATION



**Model 2450BXM-50K (Shown)**



### DIMENSIONS

See Drawing	MODEL							
	2440		2450		2470		2480	
	CAPACITY							
	US (lbf)	Metric (kN)	US (lbf)	Metric (kN)	US (lbf)	Metric (kN)	US (lbf)	Metric (kN)
	7.5K, 10K, 15K	33.4, 50, 75	20K, 50K	100, 250	150K, 200K	750, 1000	300K	1350
in	mm	in	mm	in	mm	in	mm	
(1)	1.80	45.7	1.80	45.7	2.50	63.5	4.25	108.0
(2)	1.75	44.5	1.75	44.5	2.50	63.5	4.25	108.0
(3)	1-14 UNS-3B		1 ½-12 UNF-3B		2.50-12 UN		3.50-8 UN	
(4)	3.56	85.2	3.81	96.8	6.31	160.3	8.07	205.0
(5)	1.71	43.5	2.23	56.6	4.66	118.3	7.36	186.9
(6)	22.5°		20.0°		11.25°		15°	
(7)	5.50	139.7	6.00	152.4	11.00	279.4	14.00	355.6
(8)	4.50	114.3	4.88	123.8	9.50	241.3	11.75	298.5
(9)	0.41	10.4	0.53	13.5	0.78	19.9	1.03	26.2
	8 places		8 places		12 places		12 places	
(10)	1-14 UNS-3B		1 ½-12 UNF-3B		2.50-12 UN		3.50-8 UN	
(11)	Spanner holes 4 SPACED @ 90°							

2400HC V2.0 01-18-2018

## 2400 HIGH CAPACITY STANDARD STAINLESS STEEL LOAD CELL (US & METRIC)

### SPECIFICATIONS

PARAMETERS	MODEL							
	2440		2450		2470		2480	
	CAPACITY							
	US (lbf)	Metric (kN)	US (lbf)	Metric (kN)	US (lbf)	Metric (kN)	US (lbf)	Metric (kN)
	7.5K, 10K, 15K	37.5, 50, 75	20K, 50K	100, 250	150K, 200K	750, 1000	300K	1350
ACCURACY - (MAX ERROR)								
Static Error Band – %FS	±0.10		±0.10		±0.10		±0.10	
Nonlinearity – %FS	±0.10		±0.10		±0.10		±0.10	
Hysteresis – %FS	±0.08		±0.08		±0.08		±0.08	
Nonrepeatability – %RO	±0.03		±0.03		±0.03		±0.03	
Creep, in 20 min – %	±0.03		±0.05		±0.03		±0.03	
TEMPERATURE								
Compensated Range	°F	+15 to +115	+15 to +115	+15 to +115	+15 to +115	+15 to +115	+15 to +115	+15 to +115
	°C	-10 to +45	-10 to +45	-10 to +45	-10 to +45	-10 to +45	-10 to +45	-10 to +45
Operating Range	°F	-65 to +200	-65 to +200	-65 to +200	-65 to +200	-65 to +200	-65 to +200	-65 to +200
	°C	-55 to +90	-55 to +90	-55 to +90	-55 to +90	-55 to +90	-55 to +90	-55 to +90
Effect on Zero – %RO / °F MAX	±0.0015		±0.0015		±0.0015		±0.0015	
Effect on Output – %RO / °F MAX	±0.0008		±0.0008		±0.0008		±0.0008	
ELECTRICAL								
Rated Output – mV/V (Nominal)	3.0		3.0		3.0		3.0	
Excitation Voltage – VDC MAX	20		20		20		20	
Bridge Resistance – Ohm (Nominal)	350		350		350		350	
Zero Balance – % RO	±2.0		±2.0		±2.0		±2.0	
Insulation Resistance – Megohm	5000		5000		5000		5000	
MECHANICAL								
Safe Overload – % CAP	±150		±150		±150		±150	
Deflection @ RO	in	0.003	0.004	0.010	0.010	0.010	0.010	0.010
	mm	0.08	0.10	0.25	0.25	0.25	0.25	0.25
Optional Base – P/N	B323-2		B320-1		N/A		N/A	
Natural Frequency– kHz	9.4		8.0		4.5		4.1	
Weight	lbs	6	9	46	130	130	130	130
	kg	2.7	4.1	20.9	59	59	59	59
Seal	Environmental							
Material	Stainless Steel		Stainless Steel		Stainless Steel		Carbon Steel	

### OPTIONS

- Base (Recommended)
- Transducer Electronic Data Sheet (TEDS)
- Custom calibration
- Special threads
- Special temperature range
- Cable length
- Add connector to cable

### CONNECTOR OPTIONS

- MS3102E-14S-6P

### ACCESSORIES

- Mating connector
- Instrumentation
- Loading hardware

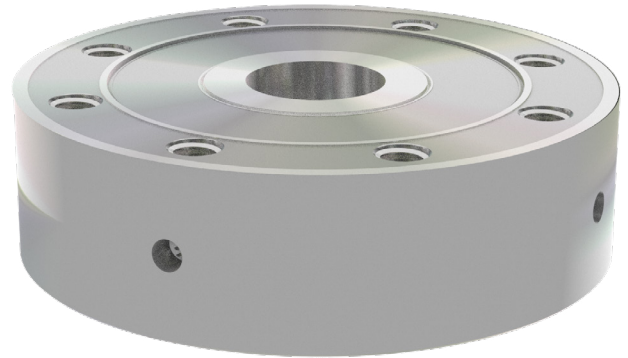
## 2400 HIGH CAPACITY STANDARD STAINLESS STEEL LOAD CELL (US & METRIC)

### BAYONET CONNECTOR



Model 2450BXM-50K

### BASE



Model B24XX

