

SINGLE POINT

1030

Aluminum, OIML C2.5, IP65

VPG TEDEA-HUNTLEIGH



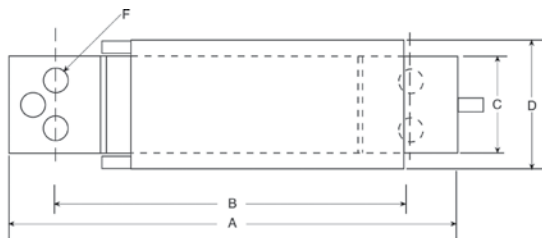
Dimensions

Picture is a representation of actual product

Rated Capacity	A	B	C	D	E	F
kg/mm						
3-15	117.9	93.7	25.4	33.3	32.5	1/4-20 UNC x 10 DP
lb/in						
6.6-33.1	4.64	3.69	1.00	1.31	1.28	1/4-20 UNC x 0.39 DP

Order Information

Load Rating		Part#	Est. Weight	Price
3 kg	6.6 lb	47882	1 lb	Consult
5 kg	11.0 lb	47883	1 lb	Consult
7 kg	15.4 lb	47884	1 lb	Consult
10 kg	22.1 lb	47885	1 lb	Consult
15 kg	33.1 lb	47886	1 lb	Consult



Specifications

- Full Scale Output:**
2.0mV/V
- Output Resistance:**
350 (± 3) ohms
- Input Resistance:**
415 (± 15) ohms
- Material/Finish:**
Anodized aluminum
- Temperature:**
Compensated range
-40°F to 150°F (-40°C to 65°C)
- Safe Overload:**
150% full scale

- Rated Excitation:**
5-10 VDC (15 V maximum)

- Total Error:**
0.02% full scale

- Insulation Resistance:**
5,000 megohms

- Deflection at Capacity:**
3 kg-15 kg=0.015 in (0.4 mm)

- Seal Type:**
Environmentally sealed; IP65

- Cable Length:**
1 m (3.3 ft)

- Cable Diameter:**
0.200 PVC jacket

- Cable Color Code:**
Green+ Excitation
Black- Excitation
Blue+ Sense
Brown- Sense
Red+ Signal
White- Signal

- Platform Size:**
13.78 x 13.78 in

- Warranty:**
One-year limited warranty

- Approvals:**

www.ricelake.com | Phone: 800-472-6703

