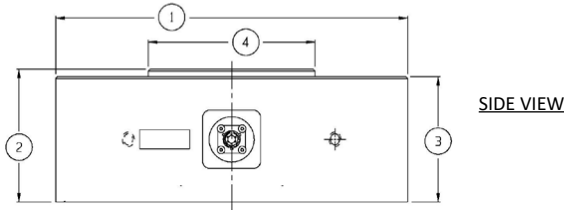


## 12x8 FLANGE LOAD CELL (US & METRIC)

### FEATURES & BENEFITS

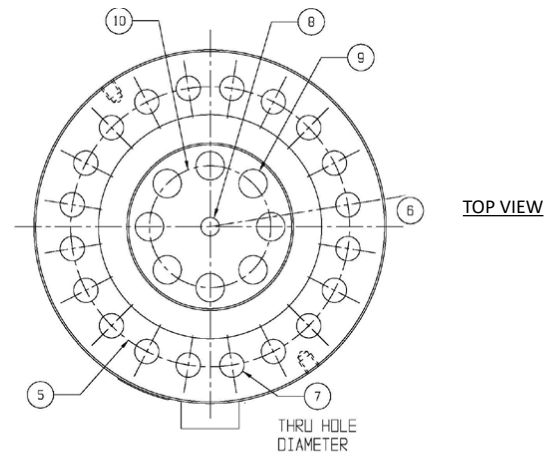
- Standard flange design mounts directly to cylinders
- Tension and compression
- Fatigue rated
- Proprietary Interface temperature compensated strain gages
- Performance to 0.05%
- Eccentric load compensated
- Low deflection
- Alignment hole
- 0.0008%/°F (0.0015%/°C) temp. effect on output
- Barometric compensation
- Ease of installation
- Increased accuracy
- Ability to measure torsion with optional bridges
- Fatigue rated – Can survive 100 million fully reversed load cycles. Ideal for long term cycle testing when failure is unaffordable



### STANDARD CONFIGURATION



Model 1220ACK-50K (shown)



### DIMENSIONS

See Drawing	MODEL													
	1228		1238		1248		1258		1268		1288		1298	
	CAPACITY													
	US (lbf)	Metric (kN)	US (lbf)	Metric (kN)	US (lbf)	Metric (kN)	US (lbf)	Metric (kN)	US (lbf)	Metric (kN)	US (lbf)	Metric (kN)	US (lbf)	Metric (kN)
	30K	50, 100, 140	55K	250	110K	500	220K	1000	330K	1500	Consult Factory			
	in	mm	in	mm	in	mm	in	mm	in	mm	in	mm	in	mm
(1)	Ø6.06	Ø153.9	Ø8.00	Ø203.1	Ø11.00	Ø279.3	Ø12.00	Ø304.8	Ø15.50	Ø393.7	Ø20.50	Ø520.7	Ø26.00	Ø660.4
(2)	1.75	44.4	2.50	63.5	3.50	88.9	4.5	114.3	5.50	139.7	6.25	158.8	7.75	196.8
(3)	1.63	41.3	2.25	57.2	3.00	76.2	4.25	108.0	5.00	127.0	6.00	152.4	7.50	190.5
(4)	Ø2.65*	Ø67.3	Ø3.76	Ø95.4	Ø4.81	Ø122.2	Ø5.68	Ø144.3	Ø7.73	Ø196.3	Ø10.55	Ø267.9	Ø13.79	Ø350.3
(5)	Ø5.125	Ø130.18	Ø6.500	Ø165.10	Ø9.000	Ø228.60	Ø9.500	Ø241.30	Ø12.684	Ø322.17	Ø16.500	Ø419.10	Ø20.500	Ø520.70
(6)	15°		11.25°		11.25°		9.0°		7.5°		6.43°		5.63°	
(7)	Ø0.41	Ø10.3	Ø0.50	Ø12.7	Ø0.66	Ø16.7	Ø0.83	Ø21.01	Ø0.98	Ø25.0	Ø1.06	Ø26.9	Ø1.32	Ø33.5
	12 places		16 places		16 places		20 places		24 places		28 places		32 places	
(8)	Ø0.316	Ø8.01	Ø0.630	Ø16.00	Ø0.630	Ø16.00	Ø0.630	Ø16.00	Ø0.787	Ø20.0	Ø1.024	Ø26.00	Ø1.339	Ø34.00
(9)	Ø0.41	Ø10.5	Ø0.65	Ø16.5	Ø0.65	Ø16.5	Ø0.97	Ø24.6	Ø0.98	Ø25.0	Consult Factory			
	8 places		8 places		8 places		8 places		12 places					
(10)	Ø1.772	Ø45.01	Ø2.795	Ø71.00	Ø2.795	Ø71.00	Ø4.134	Ø105.00	Ø5.906	Ø150.1				

**Note:**

- Dimensions are approximate
- Contact factory for current drawings
- \*2.41 (61.2) for 50 kN
- For lower capacities; refer to the 1700 model

All product descriptions are for general information only. They are not to be understood as a guarantee of quality or durability and do not constitute any liability whatsoever.

## 12x8 FLANGE LOAD CELL (US & METRIC)

### SPECIFICATIONS

PARAMETERS		MODEL						
		1228	1238	1248	1258	1268	1288	1298
		CAPACITY						
Measuring Range	US (lbf)	30K	55K	110K	220K	330K	Consult Factory	
	Metric (kN)	50, 100, 140	250	500	1000	1500		
<b>ACCURACY – (MAX ERROR)</b>								
Static Error Band – %FS		±0.05	±0.05	±0.06	±0.10	±0.12	±0.15	±0.20
Nonlinearity – %FS		±0.05	±0.05	±0.06	±0.10	±0.12	±0.15	±0.20
Hysteresis – %FS		±0.05	±0.05	±0.07	±0.10	±0.12	±0.15	±0.20
Non-repeatability – %RO		±0.01	±0.01	±0.01	±0.01	±0.01	±0.01	±0.01
Creep, in 20 min – %		±0.025	±0.025	±0.025	±0.025	±0.025	±0.025	±0.025
Side Load Sensitivity – %		±0.25	±0.25	±0.25	±0.25	±0.25	±0.25	±0.25
Eccentric Load Sensitivity – %	in	±0.25	±0.25	±0.25	±0.25	±0.25	±0.25	±0.50
	mm	±0.01	±0.01	±0.01	±0.01	±0.01	±0.01	±0.02
<b>TEMPERATURE</b>								
Compensated Range	°F	+15 to +115	+15 to +115	+15 to +115	+15 to +115	+15 to +115	+15 to +115	+15 to +115
	°C	-10 to +45	-10 to +45	-10 to +45	-10 to +45	-10 to +45	-10 to +45	-10 to +45
Operating Range	°F	-65 to +200	-65 to +200	-65 to +200	-65 to +200	-65 to +200	-65 to +200	-65 to +200
	°C	-55 to +90	-55 to +90	-55 to +90	-55 to +90	-55 to +90	-55 to +90	-55 to +90
Effect on Zero – %RO MAX	°F	±0.0008	±0.0008	±0.0008	±0.0008	±0.0008	±0.0008	±0.0008
	°C	±0.0015	±0.0015	±0.0015	±0.0015	±0.0015	±0.0015	±0.0015
Effect on Output – %RO / °F MAX	°F	±0.0008	±0.0008	±0.0008	±0.0008	±0.0008	±0.0008	±0.0008
	°C	±0.0015	±0.0015	±0.0015	±0.0015	±0.0015	±0.0015	±0.0015
<b>ELECTRICAL</b>								
Rated Output – mV/V (Nominal)		2.2	2.2	2.2	2.2	2.2	2.2	2.2
Excitation Voltage – VDC MAX		20	20	20	20	20	20	20
Bridge Resistance – Ohm (Nominal)		350 ±3.5	350 ±3.5	350 ±3.5	350 ±3.5	350 ±3.5	350 ±3.5	350 ±3.5
Zero Balance – %RO MAX		±1.0	±1.0	±1.0	±1.0	±1.0	±1.0	±1.0
Insulation Resistance – Megohm – MIN		5000	5000	5000	5000	5000	5000	5000
<b>MECHANICAL</b>								
Safe Overload – %CAP		±275	±275	±275	±275	±275	±275	±275
Deflection @ RO	in	0.001	0.002	0.004	0.005	0.006	Consult factory	
	mm	0.03	0.05	0.10	0.13	0.15	Consult factory	
Natural Frequency – kHz		7	5.9	4.4	5	5.1	5.5	5.5
Weight	lbs	9.5	26	71	103	204	450	860
	kg	4.3	11.8	32.2	46.7	92.5	204	390
Connector		PT02E-10-6P						
Calibration		Tension & Compression						
Material		Alloy steel						

### OPTIONS

- Connector protection
- Standardized output
- Transducer Electronic Data Sheet (TEDS)
- Add connector to cable
- Multiple bridge
- Special threads
- Dual diaphragm
- Special temperature range
- Cable length

### CONNECTOR OPTIONS

- Integral cable
- PC04E-10-6P screw connector
- PT02E-10-6P bayonet connector

### ACCESSORIES

- Mating connector
- Instrumentation