

Model 1200 Flange Load Cell

- Standard flange design mounts directly to cylinders
- Tension and compression
- Fatigue rated
- Proprietary Interface temperature compensated strain gages
- Performance to 0.05%
- Eccentric load compensated
- Low deflection
- Alignment hole
- 0.0008%/°F (0.0015%/°C) temp. effect on output
- Barometric compensation



SPECIFICATIONS

PARAMETERS	MODEL						
	1228	1238	1248	1258	1268	1288	1298
	CAPACITY						
U.S. Models (lbf)	30K	55K	110K	220K	330K	Consult Factory	
Metric Models (kN)	50, 100, 140	250	500	1000	1500	Consult Factory	
ACCURACY – (MAX ERROR)							
Static Error Band-% FS	±0.05	±0.05	±0.06	±0.10	±0.12	±0.15	±0.20
Nonlinearity-% FS	±0.05	±0.05	±0.06	±0.10	±0.12	±0.15	±0.20
Hysteresis-% FS	±0.05	±0.05	±0.07	±0.10	±0.12	±0.15	±0.20
Nonrepeatability-% RO	±0.01	±0.01	±0.01	±0.01	±0.01	±0.01	±0.01
Creep, in 20 min-%	±0.025	±0.025	±0.025	±0.025	±0.025	±0.025	±0.025
Side Load Sensitivity-%	±0.25	±0.25	±0.25	±0.25	±0.25	±0.25	±0.25
Eccentric Load Sensitivity-%/in	±0.25	±0.25	±0.25	±0.25	±0.25	±0.25	±0.50
Eccentric Load Sensitivity-%/mm	±0.01	±0.01	±0.01	±0.01	±0.01	±0.01	±0.02
TEMPERATURE							
Compensated Range-°F	15 to 115	15 to 115	15 to 115	15 to 115	15 to 115	15 to 115	15 to 115
Compensated Range-°C	-10 to 45	-10 to 45	-10 to 45	-10 to 45	-10 to 45	-10 to 45	-10 to 45
Operating Range-°F	-65 to 200	-65 to 200	-65 to 200	-65 to 200	-65 to 200	-65 to 200	-65 to 200
Operating Range-°C	-55 to 90	-55 to 90	-55 to 90	-55 to 90	-55 to 90	-55 to 90	-55 to 90
Effect on Zero-%RO/°F – MAX	±0.0008	±0.0008	±0.0008	±0.0008	±0.0008	±0.0008	±0.0008
Effect on Zero-%RO/°C – MAX	±0.0015	±0.0015	±0.0015	±0.0015	±0.0015	±0.0015	±0.0015
Effect on Output-%/°F – MAX	±0.0008	±0.0008	±0.0008	±0.0008	±0.0008	±0.0008	±0.0008
Effect on Output-%/°C – MAX	±0.0015	±0.0015	±0.0015	±0.0015	±0.0015	±0.0015	±0.0015
ELECTRICAL							
Rated Output-mV/V (Nominal)	2.2	2.2	2.2	2.2	2.2	2.2	2.2
Excitation Voltage-VDC MAX	20	20	20	20	20	20	20
Bridge Resistance-Ohm	350 ±3.5	350 ±3.5	350 ±3.5	350 ±3.5	350 ±3.5	350 ±3.5	350 ±3.5
Zero Balance-% RO- MAX	±1.0	±1.0	±1.0	±1.0	±1.0	±1.0	±1.0
Insulation Resistance-Megohm- MIN	5000	5000	5000	5000	5000	5000	5000
MECHANICAL							
Safe Overload-% CAP	±275	±275	±275	±275	±275	±275	±275
Deflection @ RO-inch	0.001	0.002	0.004	0.005	0.006	Consult Factory	
Deflection @ RO-mm	0.03	0.05	0.10	0.13	0.15	Consult Factory	
Natural Frequency-kHz	7	5.9	4.4	5	5.1	5.5	5.5
Weight-lb	9.5	26	71	103	204	450	860
Weight-kg	4.3	11.8	32.2	46.7	92.5	204	390
Connector	PT02E-10-6P						
Calibration	T & C	T & C	T & C	T & C	T & C	T & C	T & C

1200 Flange
10/16/14

DIMENSIONS

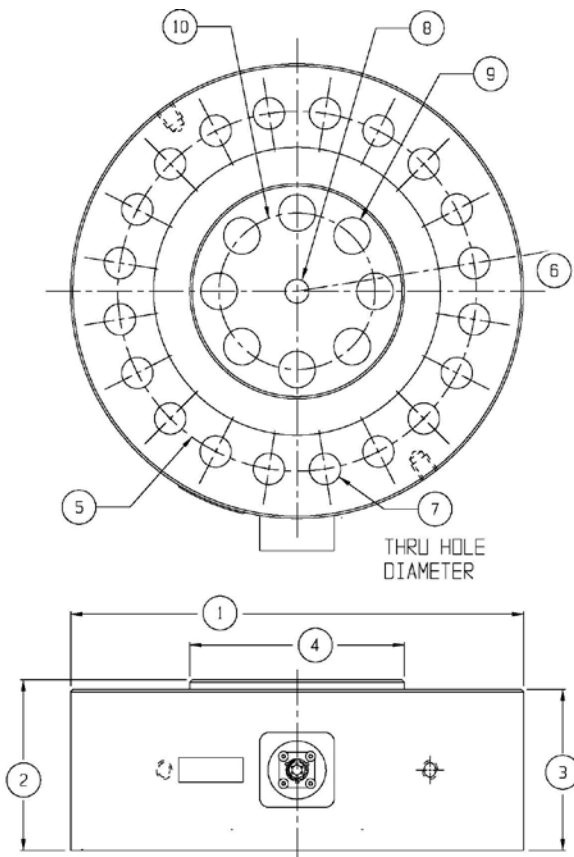
See Drawing	MODEL													
	1228		1238		1248		1258		1268		1288		1298	
	CAPACITY													
	U.S. (lbf)	Metric (kN)	U.S. (lbf)	Metric (kN)	U.S. (lbf)	Metric (kN)	U.S. (lbf)	Metric (kN)	U.S. (lbf)	Metric (kN)	U.S. (lbf)	Metric (kN)	U.S. (lbf)	Metric (kN)
	30K 50, 100 140		55K 250		110K 500		220K 1000		330K 1500		Consult Factory		Consult Factory	
	inch mm		inch mm		inch mm		inch mm		inch mm		inch mm		inch mm	
(1)	6.06	153.9	8.00	203.1	11.00	279.3	12.00	304.8	15.50	393.7	20.50	520.7	26.00	660.4
(2)	1.75	44.4	2.50	63.5	3.50	88.9	4.5	114.3	5.50	139.7	6.25	158.8	7.75	196.8
(3)	1.63	41.3	2.25	57.2	3.00	76.2	4.25	108.0	5.00	127.0	6.00	152.4	7.50	190.5
(4)	2.65*	67.3	3.76	95.4	4.81	122.2	5.68	144.3	7.73	196.3	10.55	267.9	13.79	350.3
(5)	5.125	130.18	6.500	165.10	9.000	228.60	9.500	241.30	12.684	322.17	16.500	419.10	20.500	520.70
(6)	15°		11.25°		11.25°		9.0°		7.5°		6.43°		5.63°	
(7)	0.41	10.3	0.50	12.7	0.66	16.7	0.83	21.01	0.98	25.0	1.06	26.9	1.32	33.5
	12 places		16 places		16 places		20 places		24 places		28 places		32 places	
(8)	0.316	8.01	0.630	16.00	0.630	16.00	0.630	16.00	0.787	20.00	1.024	26.00	1.339	34.00
(9)	0.41	10.5	0.65	16.5	0.65	16.5	0.97	24.6	0.98	25.0	Consult Factory		Consult Factory	
	8 places		8 places		8 places		8 places		12 places					
(10)	1.772	45.01	2.795	71.00	2.795	71.00	4.134	105.00	5.906	150.01	Consult Factory		Consult Factory	

*2.41 (61.2) for 50kN

Dimensions are approximate.

Contact factory for current drawings.

For lower capacities; refer to the 1700 model.



Dimensions in mm

All product descriptions are for general information only. They are not to be understood as a guarantee of quality or durability and do not constitute any liability whatsoever.

OPTIONS

- Integral Cable
- PC04E-10-6P Connector
- Multiple Bridge
- Standardized Output
- Connector Protection
- Transducer Electronic Data Sheet (TEDS)

ACCESSORIES

- Mating Connector
- Instrumentation

TECHNICAL ADVANTAGES

- Ease of installation
- Increased accuracy
- Ability to measure torsion with optional bridges
- Fatigue rated – Can survive 100 million fully reversed load cycles. Ideal for long term cycle testing when failure is unaffordable